

TOUGHBOOK 56 mk1 Solution Guide

March 2026





TOUGHBOOK 56

14" RUGGED WINDOWS 11 PRO NOTEBOOK WITH OPTIONAL TOUCHSCREEN

The TOUGHBOOK 56 with Windows 11 Pro is a 14" rugged laptop designed for professionals in motion.

Its reinforced magnesium chassis meets military-grade standards while maintaining a slim, lightweight form factor with ergonomic, glove-friendly input and an integrated retractable handle.

A fully modular architecture and hot-swappable dual batteries provide up to 24 hours of operation, supporting long shifts and varied workflows.

With next-generation processing power, advanced connectivity options and built-in multi-layer security, the TOUGHBOOK 56 delivers reliable performance and protection in demanding environments.

Standard Model:

- Intel® Core™ Ultra5 235H vPro™ or Core™ Ultra7 265H vPro™
- Windows 11 Pro / Red Hat Enterprise Linux 10 certified
- 14" WUXGA Active Matrix LCD
- Lightweight and slim design (starting 2.13 kg and 36.3mm)
- 16GB DDR5 RAM and 512GB NVMe OPAL SSD
- 1x USB 3.2 Type A, 2x Thunderbolt 4, 1x HDMI, 1x LAN
- Left, Right and Rear Expansion Slot
- 5MP Windows Hello Front Webcam as standard
- 5G or 4G with eSIM optional
- Dedicated GNSS optional

- -29 °C to +60 °C operating temperature
- Patented ergonomic integrated retractable handle
- IP53 Ingress Protection*
- Withstands drops from a height of 91cm*
- Shock and vibration protected* for vehicle docking

Touchscreen Model:

All the above, plus:

- 14" WUXGA Active Matrix, capacitive Touch Screen, 1.000cd/m² brightness

* Tested by an independent third-party lab referencing MIL-STD810H and IEC 60529

All technical specifications are subject to change without notice.

TOUGHBOOK 55 ACCESSORY ECOSYSTEM



All accessories in this guide are fully tested and certified in the Panasonic factory by Panasonic engineers

MODULAR OPTIONS

Left Expansion Area



Right Expansion Area



Rear Expansion Area



LEFT EXPANSION AREA OPTIONS

Left Expansion Area

2nd SSD Packs:

Option	SKU
OPAL 512 GB	FZ-V2S560T1U
OPAL 1 TB	FZ-V2S561T1U
OPAL 2 TB	FZ-V2S562T1U



DVD Multi Drive

Part No: **FZ-VDM561W**



10 GBIT LAN (RJ45)

Part No: **FZ-VLN561U**



Smart Card Reader

Part No: **FZ-VSC552U**

All technical specifications are subject to change without notice.

RIGHT EXPANSION AREA OPTIONS

Right
Expansion Area

Smart Card Reader

Part No: FZ-VSC561U



Battery Pack

Common for standard battery.

Part No: FZ-VZSU1HU



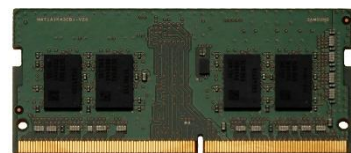
Finger Print Reader

Part No: FZ-VFP551U



RAM Modules:

Option	SKU
16GB	FZ-BAZ2416
32GB	FZ-BAZ2432



All technical specifications are subject to change without notice.

REAR EXPANSION AREA OPTIONS

Rear
Expansion Area

VGA + True Serial + USB
3.2 Type A

Part No: FZ-VCN551U



VGA + True Serial +
Gigabit LAN

Part No: FZ-VCN552U



USB 3.2 Type A + USB 3.2
Type c

Part No: FZ-VCN554W



2.5Gigabit LAN + micro SD

Part No: FZ-VCN561U



All technical specifications are subject to change without notice.

POWER MANAGEMENT SOLUTIONS

Main Battery

(6Cell, 68 Wh)

Part No: **FZ-VZSU1HU**



AC Adaptor

Part No: **CF-AA5713A2***

*E: UK; G: EU; T: Italy; D: Switzerland



4-bay Battery Charger

Part No: **FZ-VCB551W**

Does not contain AC adaptor



Auto Adaptor (120W)

Part No: **CF-LND1224A**



MIL SPEC Auto Adaptor (120W)

With bare wire input cable.

Part No: **PCPE-LND3676**



Havis DC Power Supply (120W)

With bare wire input cable.

Part No: **TB-HAV-PSU1**



PORT REPLICATION

TOUGHBOOK 55/56 Desktop Port Replicator

Part No: **FZ-VEB551U**

Dust is kept off by
Self-Cleaning connector



Docking Connector

Release Lock



Rear



DC-IN
LAN
2x USB 3.0
HDMI
VGA
Serial
Kensington Lock

Left



USB 2.0

All technical specifications are subject to change without notice.

CARRYING SOLUTIONS

TOUGHBOOK 55 Always-On Case

Part No: **PCPE-INF55AO**



User Harness

Adjustable four-point harness transforms any Always-On case into a hands-free accessory.

Attaches to any TOUGHBOOK case that provides 4 attachment points

Weight: 0.2 kg / 0.4 lb

Part No: **PCPE-INFUVA1**



PRODUCTIVITY SOLUTIONS

TOUGHBOOK 56 Stylus

FOR TOUCHSCREEN MODEL ONLY.

PART NO: **FZ-VNP027U**



TOUGHBOOK 55/56 Tether

PART NO: **FZ-VNT005U**



Toughmate Stylus Tether

Part No: **PCPE-INFUVA2**



USB Optical Mouse

Part No: **PCPE-LOGM901**



All technical specifications are subject to change without notice.

SECURITY & PROTECTION SOLUTIONS

LCD Screen Cleaning Cloth

Part No: **CF-VNC002U**

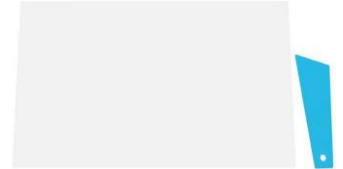
MOQ: 10 pcs



LCD Protective Film (Touchscreen Model)

Part No: **FZ-VPF561U**

MOQ: 10 pcs



Kensington Lock

Part No: **PCPE-KENLOK2**



OTHER PERIPHERALS

Slimline External CD/DVD Writer

Part No: **PCPE-FCDVR05**



All technical specifications are subject to change without notice.

CONNECTED VEHICLE SOLUTIONS

VEHICLE DOCKS

TOUGHBOOK 54/55/56 Vehicle Dock (Gamber-Johnson)

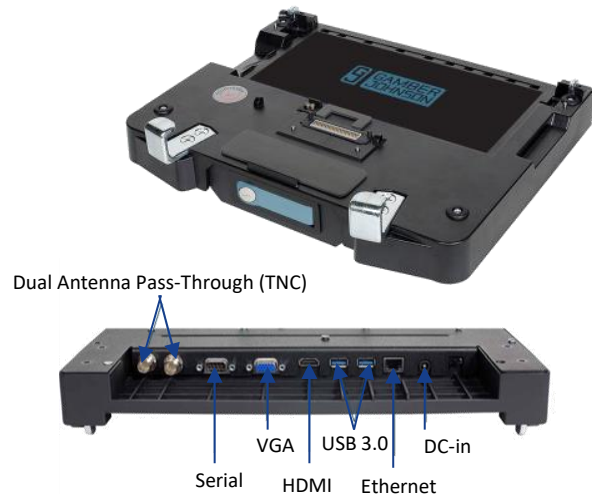
Compatible with TOUGHBOOK 54/55 and TOUGHBOOK 56.

- Optional antenna pass-through
- Ports: 16V DC-in; 1 x LAN; 2 x USB 3.0; 1 x Serial; 1 x HDMI; 1 x VGA
- VESA 75mm mounting pattern
- Power supply not included

Size: 89 x 342 x 301 mm
Weight: 2.5 kg

Part Nos:

- **PCPE-GJ54V01** No RF
- **PCPE-GJ54V02** Dual RF



TOUGHBOOK 55/56 Vehicle Dock (PMT)

Compatible with TOUGHBOOK 55 and TOUGHBOOK 56.

- Optional antenna pass-through
- Ports: 16V DC-in; 1 x LAN; 2 x USB 3.0; 1 x Serial; 1 x HDMI; 1 x VGA
- VESA 75mm mounting pattern
- Power supply not included

Size: 78 x 316 x 256 mm
Weight: 3.7 kg

Part Nos:

- **TB-PMT-P055.100** No RF
- **TB-PMT-P055.102** Dual RF
- **TB-PMT-P055.104** No Electronics



All technical specifications are subject to change without notice.

CONNECTED VEHICLE SOLUTIONS

ROUTERS

Cradlepoint IBR 900 Router

Compact, ruggedized Gigabit-Class LTE router for advanced in-vehicle and IoT connectivity.

Dimensions: 118mm x 113.5mm x 30.5mm / 4.6" x 4.5" x 1.2"

Weight: 400g / 0.88 lb

Part Nos:

- **PCPE-CRD90E1** - Cradlepoint IBR900 router with 1-year NetCloud Mobile Essentials Plan
- **PCPE-CRD90E3** - Cradlepoint IBR900 router with 3-year NetCloud Mobile Essentials Plan
- **PCPE-CRD90E5** - Cradlepoint IBR900 router with 5-year NetCloud Mobile Essentials Plan
- **PCPE-CRD90A1** - Cradlepoint IBR900 router with 1-year NetCloud Mobile Advanced Plan
- **PCPE-CRD90A3** - Cradlepoint IBR900 router with 3-year NetCloud Mobile Advanced Plan
- **PCPE-CRD90A5** - Cradlepoint IBR900 router with 5-year NetCloud Mobile Advanced Plan



All technical specifications are subject to change without notice.

MOBILITY SERVICES

Custom BIOS Services

Part No: **PCPE-PSBIOSG-V**

Autopilot Enrolment

Part No: **PCPE-PSAUTOP-V**

SIM Installation

Part No: **PCPE-PSSIMIN-V**

Information Management Bundle

IMEI, MAC, SIM, ASSET, Hardware Hash reporting.

Part No: **PCPE-PSATAGB-V**

Solution Packaging

Up to 10 items packaged together in a box.

Does not include custom designed case.

Part No: **PCPE-PSSPACK-V**

Customer Branding

Logo badge on device casing or bezel.

Part No: **PCPE-PSLOGOB-V**

Asset Tagging

Standard, using CPE label set.

Part No: **PCPE-PSATAG1-V**

All technical specifications are subject to change without notice.

PROTECT FULL MAINTENANCE SERVICES



ProTect PLUS

Every TOUGHBOOK is supported by our standard three year ProTect service, but ProTect PLUS is a value-packed upgrade, offering you extra peace of mind through the additional of the following services:

- Battery Confidence: proactive battery replacement (3 years only)
- Monthly service reporting on full estate of devices
- One working day of on-demand consultancy every year
- Full access to the TOUGHBOOK Knowledge Base
- Remote technical support
- Full inspection report for returned devices
- Small, cosmetic repairs and reinstatement of IP integrity

SKU	Description
PCPE-PROTP3-V	TOUGHBOOK ProTect PLUS 3 Years (Incl. 3 yr Battery Confidence)
PCPE-PROTP4-V	TOUGHBOOK ProTect PLUS 4 Years (Incl. 3 yr Battery Confidence)
PCPE-PROTP5-V	TOUGHBOOK ProTect PLUS 5 Years (Incl. 3 yr Battery Confidence)



ProTect PLUS Premium

For the ultimate protection, tailor your service plan by adding on any of the ProTect PLUS Premium modules below:

- Infinity Maintenance Service – *Infinity pricing all ProTect PLUS services. Other Premium modules below are priced on top of Infinity.*
- Remote Device Monitoring
- Self-Maintenance: Training & Spare Parts Access
- Return without SSD
- Global Service
- Device Management
- Software Maintenance
- Rapid Replacement
- Alternative Packaging

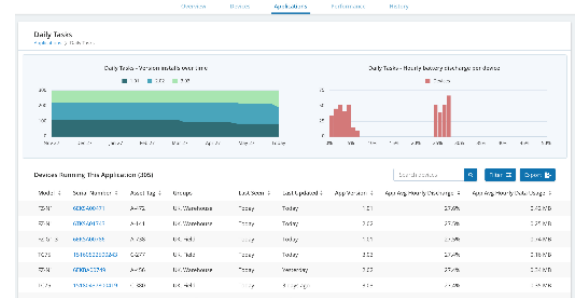
SKU	Description
PCPE-INFAB3-V	TOUGHBOOK Infinity 3 Years (Incl. 3 yr Battery Confidence)
PCPE-INFAB4-V	TOUGHBOOK Infinity 4 Years (Incl. 3 yr Battery Confidence)
PCPE-INFAB5-V	TOUGHBOOK Infinity 5 Years (Incl. 3 yr Battery Confidence)

ENTERPRISE MOBILITY INTELLIGENCE



TOUGHBOOK Smart Essentials Suite

Real time analytics, powered by B2M Solutions, showing the health and performance of your estate of mobile devices, focussing on areas such as battery life, data usage, disruptions and connectivity. Enables the user to recognise patterns of usage and potentially pre-empt issues before they arise. The full suite includes access to the core dashboard as well as the Smart Battery Monitor dashboard, and APIs.



SKU	Description
-----	-------------

CF-LESPSESS1	Smart Essentials Bundle - 1 year (Smart Service, Battery Monitor and APIs)
CF-LESPSESS3	Smart Essentials Bundle - 3 year (Smart Service, Battery Monitor and APIs)
CF-LESPSESS5	Smart Essentials Bundle - 5 year (Smart Service, Battery Monitor and APIs)

SOFTWARE SOLUTION PARTNERS



Cyber Resilience

Absolute is the industry benchmark in endpoint resilience. It ensures customers' digital operations and mobile workforces stay efficient, productive, and safe using innovative [Secure Endpoint](#) and [Secure Access](#) products—leveraging the advantage of pioneering Absolute Persistence® technology embedded in the firmware of more than 600,000,000 devices. Once activated, Absolute Persistence is fiercely and uniquely resilient, surviving attempts to disable it, even if the device is re-imaged, the hard drive is replaced, or the firmware is updated. **No other technology can do this.**

Contact your sales rep for part numbers.

Website: <https://www.absolute.com/partners/device-compatibility/#panasonic>



Enterprise Mobility Management

Part of the [SOTI ONE Platform](#), SOTI MobiControl is the Enterprise Mobility Management (EMM) solution designed for any device, any form factor, and any operating system (OS). Deploy apps to smartphones. Enroll and provision new tablets in the field. Track the location of rugged devices. Identify and neutralize security risks to the IoT endpoints. Protect critical data stored on mobile devices. Minimize device downtime so field workers stay productive.

Contact your sales rep for part numbers.

Website: <https://www.soti.net/products/soti-mobicontrol/>



Sygic

Sygic Professional GPS Navigation works offline and features truck specific routing, itinerary with time windows and over 60 APIs for development with Android and Windows based apps. Sygic technology is accessible through a complete set of SDKs for web and mobile development. During Sygic's 18-year experience, we developed countless mapping and navigation solutions for 3000+ integration partners and customers in various industries.

Contact your sales rep for part numbers.

Website: <https://www.sygic.com/enterprise/professional-gps-navigation-sdk>

ACCESSORY SUMMARY

Solution Type	Part Number	Description
Left Expansion Area Options	FZ-V2S560T1U	OPAL 512 GB 2 nd SSD
	FZ-V2S561T1U	OPAL 1TB 2 nd SSD
	FZ-V2S562T1U	OPAL 2TB 2 nd SSD
	FZ-VLN561U	10 Gigabit LAN (RJ45)
	FZ-VDM561W	DVD Multi Drive
	FZ-VSC552U	Smart Card Reader
Right Expansion Area Options	FZ-VSC561U	Smart Card Reader
	FZ-VFP551U	Finger Print Reader
	FZ-VZSU1HU	Battery Pack
Rear Expansion Area Options	FZ-VCN551U	VGA x1, Serial x1, USB3.2 Type A x1
	FZ-VCN552U	VGA x1, Serial x1, 2nd Gigabit LAN x1
	FZ-VCN554W	USB 3.2 Type A x1 + USB 3.2 Type c x1
	FZ-VCN561U	2.5 Gigabit LAN x1 + micro SD x1
RAM Modules	FZ-BAZ2416	16 GB RAM
	FZ-BAZ2432	32GB RAM
Docking Solutions	FZ-VEB551U	TOUGHBOOK 55/56 Desktop Port Replicator
	PCPE-GJ54V01/2	TOUGHBOOK 54/55/56 Vehicle Dock (Gamber-Johnson)
	TB-PMT-P055.100 / 102 / 104	TOUGHBOOK 55/56 Vehicle Dock (PMT)
Carry Solutions	PCPE-INF55AO	TOUGHBOOK 55/56 Always On Case
	PCPE-INFUVA1	User Harness
Power Management	FZ-VZSU1HU	Replacement Main Battery (6Cell, 68 Wh)
	FZ-VCB551W	4-bay Battery Charger
	CF-AA5713A2*	AC Adaptor (*E: UK; G: Continental; T: Italian ; D: Swiss
	CF-LND1224A	Auto Adaptor (120W)
	PCPE-LND3676	MIL SPEC Auto Adaptor (120W)
	TB-HAV-PSU1	Havis DC Power Supply (120W)
Productivity	FZ-VNP551U	TOUGHBOOK 56 Touch Screen Stylus Pen
	FZ-VNP027U	Stylus Tether
	PCPE-INFUVA2	Toughmate Stylus tether
	PCPE-LOGM901	USB Optical Mouse
Connectivity	PCPE-CRD90E1	Cradlepoint IBR900 router with 1-year NetCloud Mobile Essentials
	PCPE-CRD90E3	Cradlepoint IBR900 router with 3-year NetCloud Mobile Essentials
	PCPE-CRD90E5	Cradlepoint IBR900 router with 5-year NetCloud Mobile Essentials
	PCPE-CRD90A1	Cradlepoint IBR900 router with 1-year NetCloud Mobile Advanced
	PCPE-CRD90A3	Cradlepoint IBR900 router with 3-year NetCloud Mobile Advanced
	PCPE-CRD90A5	Cradlepoint IBR900 router with 5-year NetCloud Mobile Advanced

All technical specifications are subject to change without notice.

ACCESSORY SUMMARY

Solution Type	Part Number	Description
Security, Protection & Cleaning	PCPE-KENLOK2	Kensington Lock
	CF-VNC002U	LCD Cleaning Cloth (MOQ: 10pcs)
	FZ-VPF561U	LCD Protective Film (Touchscreen Model)
Peripherals	PCPE-FCDVR05	USB External CD-DVD Drive
Professional Services	PCPE-PSBIOSG-V	Custom BIOS Service – Gold
	PCPE-PSSIMIN-V	SIM Installation
	PCPE-PSATAG1-V	Asset Tagging
	PCPE-PSATAGB-V	Information Management Bundle
	PCPE-PSAUTOP -V	Autopilot Enrolment
	PCPE-PSLOGOB-V	Custom logo badge
	PCPE-PSSPACK-V	Solution Packaging
	PCPE-PSBTM01-V	Bespoke Training Material
Smart Services	CF-LESPSESS1	Smart Essentials Bundle - 1 year (Smart Service, Battery Monitor and APIs)
	CF-LESPSESS3	Smart Essentials Bundle - 3 year (Smart Service, Battery Monitor and APIs)
	CF-LESPSESS5	Smart Essentials Bundle - 5 year (Smart Service, Battery Monitor and APIs)
Lifecycle support solutions	PCPE-PROTP3	TOUGHBOOK ProTect PLUS 3 Years (Incl. 3 yr Battery Confidence)
	PCPE-PROTP4-V	TOUGHBOOK ProTect PLUS 4 Years (Incl. 3 yr Battery Confidence)
	PCPE-PROTP5-V	TOUGHBOOK ProTect PLUS 5 Years (Incl. 3 yr Battery Confidence)
	PCPE-INFAB3-V	TOUGHBOOK Infinity 3 Years (Incl. 3 yr Battery Confidence)
	PCPE-INFAB4-V	TOUGHBOOK Infinity 4 Years (Incl. 3 yr Battery Confidence)
	PCPE-INFAB5-V	TOUGHBOOK Infinity 5 Years (Incl. 3 yr Battery Confidence)

Panasonic and Toughbook are brand names and registered trademarks of Panasonic Corporation. Intel, the Intel logo, Intel Core, Intel vPro, Core Inside and vPro Inside are trademarks of Intel Corporation in the U.S. and other countries. Microsoft® and Windows® are registered trademarks of Microsoft® Corporation of the United States and/or other countries. All rights reserved. All other brand names shown are the registered trademarks of the relevant companies.

Mobile Solutions Business Division – Europe (MSBDEU), Panasonic Connect Europe GmbH, Hagenauer Straße 43, D-65203 Wiesbaden (Germany).