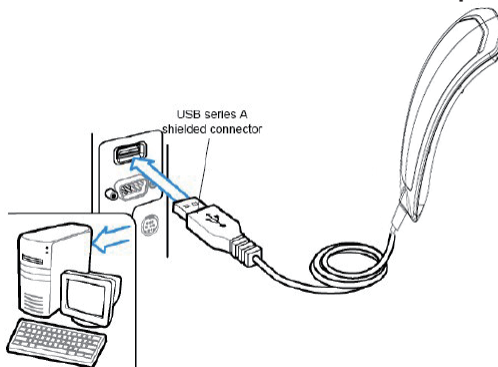




Connecting the Scanner

Connect USB cable to the USB port of a host PC.



Barcode Programming

Before starting scanning any setting barcode, please do follow the instruction below.

Scanning the Enter Setup barcode can enable the engine to enter the setup mode. Then you can scan a number of programming barcodes to configure your engine. To exit the setup mode, scan the Exit Setup barcode.

Enter Setup



Exit Setup *



Factory Default



Product Information



USB Device Type

USB HID-KBW



USB COM Port Emulation



USB HID-POS



Aiming On /Off

Normal *



Off



Always On



Scan Mode

Trigger mode*



Sense Mode



Pulse Mode



Continuous Mode



Batch Mode



Trigger Mode: A trigger pull activates a decode session.

Sense Mode: The engine activates a decode session every time it detects a barcode presented to it.

Continuous Mode: The engine automatically starts one decode session after another.

Pulse Mode: When the trigger is pulled and released, scanning is activated until a barcode is decoded or the decode session timeout expires.

Batch Mode: A trigger pull activates a round of multiple decode sessions. This round of multiple scans continues until you release the trigger. Rereading the same barcode is not allowed in the same round.

Good Read LED

Good Read LED ON *



Good Read LED OFF



Enable/Disable All Prefixes/Suffixes

Enable All Prefixes/Suffixes



Disable All Prefixes/Suffixes



* : Default Option

Thank you for purchasing the unitech product.

For other product documentation, please scan the QR code for more information.



Good Read Beep

Good Read Beep On
for Non-programming Barcode *



Good Read Beep Off
for Non-programming Barcode



Beeper Volume

Low Volume



Medium Volume



High Volume*



Good Read Beep Frequency

Extra Low Tone



Low Tone



Medium Tone*

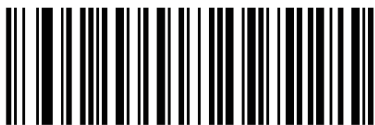


High Tone



USB Country Keyboard Types

United States*



Japan



Denmark



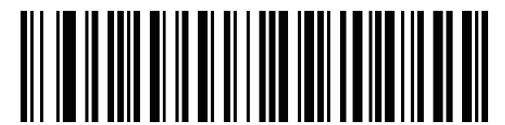
Finland



France



Turkey_F



Italy



Norway



Spain



Turkey_Q



UK



Austria, Germany



Belgium



Sweden



Russia



Portugal



* : Default Option

Thank you for purchasing the unitech product.
For other product documentation, please scan the QR code for more information.

