

## UX10 ACCESSORY SPEC BROCHURE



### GETAC TECHNOLOGY CORPORATION

5F, Building A, No. 209, Section 1, Nangang Rd., Nangang Dist., Taipei City,  
115018, Taiwan, R.O.C. Tel : +886 2 2785 7888 [globalmarketing@getac.com](mailto:globalmarketing@getac.com) |  
[www.getac.com](http://www.getac.com)

# CARRY BAG

## Features & Benefits

Constructed of durable Nylon / air mesh fabric, and featuring an adjustable padded shoulder strap, this compact carry bag provides sturdy protection for your tablet while giving maximum comfort. The functional pockets inside offer the optimal solution to transport the tablet and needed accessories together in one case, delivering extra convenience and go-anywhere productivity to mobile professionals.

### Product Information

Dimensions : L 340 x W 260 x D 65 mm  
Weight : 760g  
Main Material : Nylon, air mesh fabric

### SKU ID

GMBCX2



# DUAL BAY BATTERY CHARGER

## Features & Benefits

This external dual-bay main battery charger is designed to charge up to 2 batteries at the same time. It provides you the benefit of charging and storing the 2 main batteries together when there is limited space or power sockets. The dual-bay Charger supports the high capacity battery.

### Product Information

AC Input : 100V~240V  
DC Output : 13.05V, 2.4A Max.  
Number of charge bay : 2 Bay  
Dimension : L 160 x W 180 x H 72.5mm  
Weight : 1.2kg  
Support main batteries and high-capacity batteries.

### SKU ID

GCMCEG (EU Power Cord)	GCMCGG (ARG Power Cord)
GCMCUG (US Power Cord)	GCMC8G (IL Power Cord)
GCMCKG (UK Power Cord)	GCMCZG (ZA Power Cord)
GCMCCG (CHN Power Cord)	GCMCIG (IN Power Cord)
GCMCTG (TW Power Cord)	GCMCJG (JP Power Cord)
GCMCAG (AU Power Cord)	GCMCRG (KR Power Cord)



# HIGH CAPACITY BATTERY 9240 MAH (1-PACK)

## Features & Benefits

The high capacity battery pack extends the system run time up to two times compared to the standard battery pack, providing a great solution for mobile professionals who require extra battery life for all-day computing. The high capacity battery is compatible with Getac multi-bay chargers.

### Product Information

Battery Type : Li-ion  
Voltage : 10.8V  
Capacity : 9240mAh  
Number of cell : 3S3P  
Dimensions : L 140 x W 136 x H 21mm  
Increased device thickness : Add approx. H 11mm  
Weight : 515g

### SKU ID

GBM9X5



# MULTI-BAY BATTERY CHARGER EIGHT BAY

## Features & Benefits

The 8-bay multi-battery charger is designed to charge multiple battery packs simultaneously and provide users an efficient charging solution. The Multi-Bay Charger supports the high capacity battery.

### Product Information

AC Input : 100V~240V AC, 4.2A 50~60Hz

DC Output : 19.5V, 16.9A

\* w / 330W AC Adapter

Number of charge bays : 8 bays

Dimensions : L 465 x W 245 x H 95.3~111.3mm

Weight : 4.7 kg ,not including battery packs

Support main batteries and high-capacity batteries.

### SKU ID

GCECEK (EU Power Cord)

GCECUK (US Power Cord)

GCECKK (UK Power Cord)

GCECAK (AU Power Cord)

GCECCK (CHN Power Cord)

GCECTK (TW Power Cord)

GCECIK (IN Power Cord)



# STANDARD BATTERY 4200 MAH (1-PACK)

## Features & Benefits

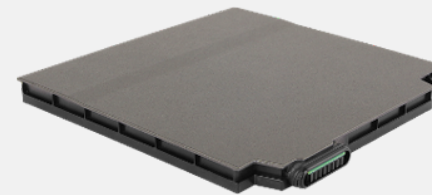
The additional battery pack ensures that you can always have a spare battery charged in case you run out of power on your device while out in the field.

### Product Information

Battery Type : Li-ion  
Voltage : 11.1V  
Capacity : Typical 4200mAh ; min. 4080mAh  
Number of cell : 3S2P  
Dimensions : L 140 x W 136 x H 10.7mm  
Weight : 305g

### SKU ID

GBM6X4



# 100W TYPE-C AC ADAPTER

## Features & Benefits

The 100W Type-C AC adapter as an additional charging solution to charge Getac rugged tablets and laptops with inherent USB type-C ports as well as the power delivery functionality. The Type-C adapter features a reversible connector type that reduces connector damages due to misuse.

### Product Information

Input : 100V-240V  
Output : 20V, 5A, 100W  
Dimensions : L 140 x W 65 x H 25mm  
Weight : 326g  
Input cable length : 1830mm  
Output cable length : 1500mm

### SKU ID

GAT1E1 (EU Power Cord)  
GAT1U1 (US Power Cord)  
GAT1K1 (UK Power Cord)  
GAT1A1 (AU Power Cord)  
GAT1C1 (CHN Power Cord)  
GAT1T1 (TW Power Cord)  
GAT1I1 (IN Power Cord)



# 120W DC-DC VEHICLE ADAPTER

## Features & Benefits

The 120W vehicle adapter comes with a choice of two types of connections: a bare wire with individual wire ends already stripped, and a cigarette lighter plug for easy connection to the cigarette lighter socket in the vehicle interior, providing a convenient way to charge and power your tablet while you are on the road.

### Product Information

Input Voltage : 11VDC~ 32VDC

Output Voltage : 19VDC

Output current : 6.32A Max.

Case Dimensions : L 131.5 x W 65.6 x H 30mm

Weight : 362g

Input cable length : 1900mm

Output cable length : 1000mm

### SKU ID

GAD2X4 (Cigarette Lighter Plug Version)

GAD2X8 (Bare Wire Version)





# 65W AC ADAPTER WITH POWER CORD

## Features & Benefits

This adapter is designed to power the device and charge its internal battery from an AC power source. A country-specific power cord is included with the adapter to fit the local power outlet in your designated country.

### Product Information

Input : 100V-240V, 50~60Hz, 1.5A  
Output : 19V, 3.42A, 65W  
Dimensions : L 108.3 x W 46.3 x H 30mm  
Weight : 250g  
Input cable length : 1830mm  
Output cable length. : 1500mm

### SKU ID

GAA6E5 (EU Power Cord)  
GAA6U5 (US Power Cord)  
GAA6K5 (UK Power Cord)  
GAA6A5 (AU Power Cord)  
GAA6C5 (CHN Power Cord)  
GAA6T5 (TW Power Cord)  
GAA6G5 (ARG Power Cord)  
GAA6I5 (IN Power Cord)  
GAA6J5 (JP Power Cord)  
GAA6R5 (KR Power Cord)



# 90W AC ADAPTER

## Features & Benefits

This adapter is designed to power the device and charge its internal battery from an AC power source. A country-specific power cord is included with the adapter to fit the local power outlet in your destination country.

### Product Information

Input : 100V-240V

Output : 19V, 4.74 A, 90W

Dimensions : L 140.1 x W 65.1 x H 25.4 mm

Weight : 275 g

Input cable length : 1830mm

Output cable length: 1500mm

### SKU ID

GAA9U5 (US Power Cord)

GAA9E5 (EU Power Cord)

GAA9K5 (UK Power Cord)

GAA9C5 (CHN Power Cord)

GAA9A5 (AU Power Cord)

GAA9T5 (TW Power Cord)

GAA9I5 (IN Power Cord)

GAA9G5 (ARG Power Cord)

GAA9J5 (JPN Power Cord)

GAA9R5 (KR Power Cord)



# 90W MIL-STD-461 AC ADAPTER

## Features & Benefits

This MIL-STD-461G AC adapter has passed the military standard and testing specification to ensure the conducted emissions (CE), conducted susceptibility (CS), radiated emissions (RE), and radiated susceptibility (RS) of the adapter can meet the requirements for the control of electromagnetic interference.

### Product Information

Input : 115V-230V, 1.6A 50~60Hz  
Output : 19V, 4.74A, 90W  
Dimensions : L 170 x W 75 x H 45mm  
Weight : 880g (without power cord)  
Input cable length : 1530mm  
Output cable length : 1800mm

### SKU ID

GAAGE5 (EU Power Cord)  
GAAGU5 (US Power Cord)  
GAAGK5 (UK Power Cord)  
GAAGC5 (CHN Power Cord)  
GAAGA5 (AU Power Cord)  
GAAGI5 (IN Power Cord)  
GAAGT5 (TW Power Cord)



# OFFICE DOCK WITH AC ADAPTER

## Features & Benefits

The Getac office dock brings out multiple I/O ports for connecting essential peripheral devices in office environment. Through the integrated ethernet, RS232, or USB connections, users can quickly collect and synchronize field data with central offices for real-time reporting and analytics. The HDMI and VGA ports also provide a convenient solution for sharing presentations or worksheets from a larger screen.

### Product Information

Dimensions : 229.1 x 209.9 x 159.7 mm

Weight : 810g

I/O Interfaces : DC in Jack x 1, Audio Output x 1, Microphone x1, USB 2.0 x 2, USB 3.0 x2, LAN x 1, HDMI x 1, VGA x 1, Serial Port x 1, Kensington Lock x 1

### SKU ID

GDODEA (EU Power Cord)  
GDODUA (US Power Cord)  
GDODKA (UK Power Cord)  
GDODAA (AU Power Cord)  
GDODCA (CHN Power Cord)  
GDODTA (TW Power Cord)  
GDODGA (ARG Power Cord)  
GDODIA (IN Power Cord)  
GDODJA (JP Power Cord)  
GDODRA (KR Power Cord)  
GDOD2A (EU & UK Power Cord)



# CAPACITIVE STYLUS & TETHER

## Features & Benefits

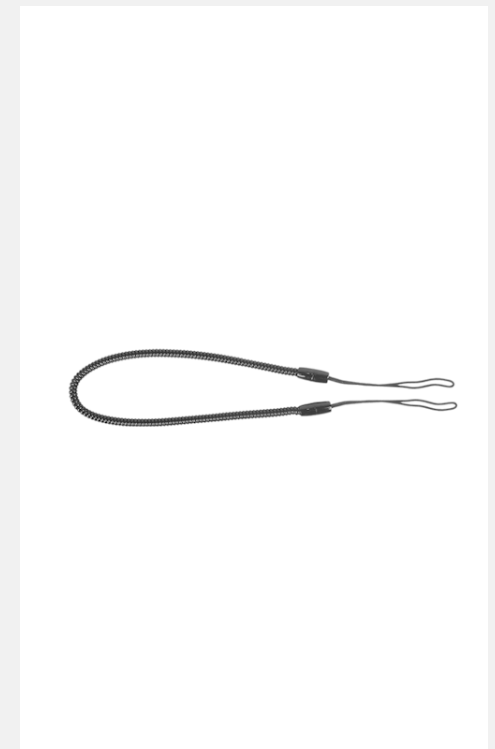
This capacitive stylus is lightweight and easy to control, allowing smooth and comfortable interaction with the touch screen without worrying about scratching the screen or leaving fingerprints on it. The stylus comes with a tether to keep it attached to the tablet, so it doesn't get lost or misplaced.

### Product Information

Stylus Dimensions: 108.7mm ; Ø9mm  
Tip size: 2.7mm ; Ø2.8mm  
Tether Length : 304mm

### SKU ID

GMPSXN



# DIGITIZER PEN WITH TETHER

## Features & Benefits

The digitizer pen provides a more accurate and easy way for data entry and handwritten signature. A shortcut button allows the right mouse button functionality when using the pen.

### Product Information

Stylus Dimensions : 109mm ; Ø9mm  
Tip size : 2.0mm ; Ø1.65mm  
Tether Length : 292mm

---

### SKU ID

GMPDX6



# GETAC DS100 USB-C DOCKING STATION

## Features & Benefits

The Getac DS100 USB-C Docking Station, featuring a slim and compact design, seamlessly consolidates cables on the workstation. This allows users to swiftly create a personalized workspace and organize their daily office environment. Compatible with various Getac laptop and tablet models, it provides extra connectivity and multiple I/O ports for additional peripherals and data sources. With support for MAC Address Pass-Through, Wake-on-LAN (WoL), and PXE Boot, the DS100 aids IT administrators in maintaining a secure, efficient, and well-managed network infrastructure. (The docking station's performance, including transfer speeds and display capabilities, may be limited by chipset and operating system when used with Getac Android systems. See the user manual for details.)

### Product Information

Dimensions: L 207 x W 90 x H 31mm (8.15" x 3.54" x 1.22")

Weight: 335g (0.74lbs)

Power Cable Length: 1.8m (5.9ft)

USB-C Upstream Cable Length: 1m (3.28ft)

I/O Ports: DC in Jack x 1, Audio in/out combo x 1, USB 2.0 x 2, USB 3.2

Gen 1 Type-A x 3, USB 3.2 Gen 2 Type-C x 2, LAN x 1, HDMI 2.0 x 1,

Display port x 2

### SKU ID

GDDSE1 (EU Power Cord)

GDDSU1 (US Power Cord)

GDDSK1 (UK Power Cord)

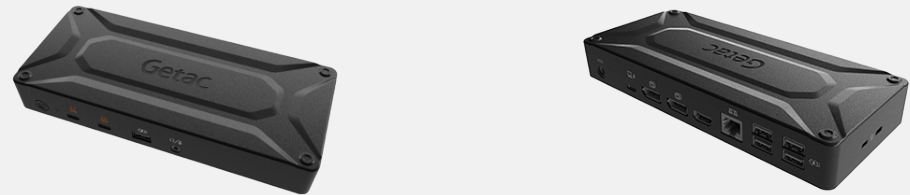
GDDSA1 (AU Power Cord)

GDDSC1 (CHN Power Cord)

GDDST1 (TW Power Cord)

GDDSI1 (IN Power Cord)

(Long production lead time. Estimated ready-to-order date: 2024/12/31)



# SCREEN PROTECTION FILM MATTE FINISH

## Features & Benefits

This screen protection film is cut precisely to fit the UX10 tablet and is easy to install and remove without leaving a sticky residue. With anti-glare coating, it not only protects the screen from the rigors of daily use but also helps to diffuse light on the screen and reduces glare, providing effortless readability for displayed information under common ambient lighting conditions.

### Product Information

Dimensions : L 217.70 x W 136.50 x D 0.24 mm  
Main Material: PET

### SKU ID

GMPFXQ





# SHOULDER HARNESS 4-POINT

## Features & Benefits

This shoulder harness has four snap hooks which attach to the corner rings on the tablet, and can be easily detached as well. The harness is worn in a backpack style, allowing the tablet to be carried hands-free in front of the user at a belt level for easy accessibility. It also delivers optimal support and a comfortable fit during movement, thanks to its wide soft padding and adjustable straps.

### Product Information

Dimension : 1380 mm x 372 mm  
Main Material : Polyester

### SKU ID

GMS4X5



# SHOULDER STRAP 2-POINT

## Features & Benefits

This shoulder strap attaches via two holders at the back of the tablet and is adjustable to fit most body sizes for both cross-body and shoulder carry. With its durable, sturdy design, the strap not only provides a comfortable, grip-free carrying option of the tablet but also helps in avoiding accidental drops while on the move. The shoulder strap can also attach to the detachable keyboard (sold separately) via two D-rings on the built-in handle.

### Product Information

Dimensions : 38 x 1530mm  
Main Material : Polyester

### SKU ID

GMS2X9



# FOLIO CASE

## Features & Benefits

Specifically designed for the UX10, the folio case features a durable cover that perfectly wraps around the tablet to protect it from scrapes, dirt, and impact without getting in the way of accessing ports and controls. The front flap with built-in anti-slip stripes allows you to set up multiple horizontal stand angles for handsfree viewing. For added convenience, the case includes four D-ring connectors for easy attachment of the shoulder strap or shoulder harness (sold separately). This provides versatility and allows the tablet to be transported in a number of ways.

### Product Information

Dimensions : 223 x 295 x 33.5 mm  
Weight : 498 g  
Main Material : Nylon Fabric

### SKU ID

GMBCXA



# ROTATING HAND STRAP WITH KICKSTAND

## Features & Benefits

The UX10 Rotating Hand Strap is designed to make using the tablet easier and more convenient to carry. The hand strap is adjustable to fit most hand sizes and can be rotated 360 degrees to find the ideal viewing angle while on-the-go. It also includes a built-in kickstand that allows for handsfree usage on flat surfaces, providing more on-the-job flexibility.

### Product Information

Dimensions : 65 x 155 x 23 mm  
Weight : 157.5 g  
Main Material : PU leather

### SKU ID

GMHRXK



# DETACHABLE KEYBOARD

## Features & Benefits

Featuring 4-level red backlighting, 82 full-size keys and an integrated touchpad, the detachable keyboard allows for a user-friendly, laptop-like operation to minimize mistakes and increase the efficiency as you perform data-intensive tasks. Its double-locking mechanism strengthens the tablet-keyboard connection and prevents the keyboard from accidentally falling off. It also features a retractable handle that can be pulled out to create a stable base, allowing the tablet screen to be safely tilted back for comfortable viewing.

### Product Information

Dimensions : L 285 x W 265 x H 20mm  
Weight : 900g  
Structure : IP65 ; membrane  
Drop : 4ft  
Layout : 82 keys

### SKU ID

GDKBUG (US)  
GDKBBG (DE)  
GDKBCG (UK)  
GDKBDG (FR)  
GDKBEG (IT)  
GDKBGG (Traditional Chinese)  
GDKBHG (RU)  
GDKBMG (Spanish)  
GDKBTG (TR)  
GDKBWG (International US)  
GDKBFG (Canadian French)



# Keyboard Dock

## Features & Benefits

Featuring 4-level red backlighting, 82 full-size keys and an integrated touchpad, the keyboard dock allows for a user-friendly, laptop-like operation to minimize mistakes and increase the efficiency as you perform data-intensive tasks. It also carries a variety of I/O ports for connections to peripherals and other devices. Its Double-locking mechanism strengthens the tablet-keyboard connection and prevents the keyboard from accidentally falling off. It also features a retractable handle that can be pulled out to create a stable base, allowing the tablet screen to be safely tilted back for comfortable viewing.

### Product Information

Dimension : L 299 x W 265 x H 22.65mm

Weight :1.10Kg

Structure : IP65; membrane

Drop : 4ft

Layout : 82 keys

I/O Interfaces : DC in Jack x 1, USB 2.0 x 1, LAN x 1, HDMI x 1, Serial Port x 1

Docking Connector (to tablet)

### SKU ID

GDKBUH (US)

GDKBBH (DE)

GDKBCH (UK)

GDKBDH (FR)

GDKBEH (IT)

GDKBMH (ES)

GDKBTH (TR)

GDKBWH (International US)

GDKBFH (Canadian French)

