



# TOUGHBOOK 55

## 14" RUGGED WINDOWS 11 PRO NOTEBOOK

TOUGHBOOK 55 with Windows 11 Pro, magnesium chassis, flexible configurations and universal bay is the most versatile 14" rugged Toughbook ever built, but doesn't compromise on durability, with a unique 'honeycomb' design for improved strength and splash resistant design.

In terms of flexibility, the TOUGHBOOK 55 is equally outstanding. It offers a huge array of flexible configuration options, making it easier for customers to have exactly the device they want.

### HD Model:

- Intel® Core™ i5-1345U vPro™ Processor
- Windows 11 Pro
- 14" HD Active Matrix LCD
- Lightweight and slim design (approx. 2.08 kg and 32.8mm)
- 16GB DDR4 RAM and 512GB NVMe OPAL SSD
- 2x USB 3.2, 1x Thunderbolt 4, 1x HDMI, 1x LAN and micro SDCX
- Front and Rear Expansion Slot
- TOUGHBOOK Universal Bay
- Dedicated GNSS and 4G LTE with eSIM optional
- -29 °C to +60 °C operating temperature
- Robust honeycomb-style magnesium casing with carry handle
- IP53 Ingress Protection\*
- Withstands drops from a height of 91cm\*
- Shock and vibration protected for vehicle docking

### Full HD Touchscreen Model:

*All the above, plus:*

- 14" Full-HD Active Matrix, capacitive Touch Screen, 1.000cd/m<sup>2</sup> brightness
- Windows Hello Front Webcam as standard

*\* Tested by an independent third-party lab following MIL-STD810H*

*All technical specifications are subject to change without notice.*



# TOUGHBOOK 55 ACCESSORY ECOSYSTEM



All accessories in this guide are fully tested and certified in the Panasonic factory by Panasonic engineers

UNIVERSAL BAY OPTIONS

**TOUGHBOOK**  
Universal Bay

2<sup>nd</sup> SSD Packs:

Option	SKU
256 GB	FZ-VSD55121U
512 GB	FZ-VSD55151U
1 TB	FZ-VSD551T1U
OPAL 256 GB	FZ-VSD55122U
OPAL 512 GB	FZ-VSD55152U
OPAL 1 TB	FZ-VSD551T2U



Other Options:

**DVD Multi Drive**

Part No: **FZ-VDM551U**



**Smart Card Reader**

Part No: **FZ-VSC552U**



**Blu-ray Disc Drive**

Part No: **FZ-VBD551U**



*All technical specifications are subject to change without notice.*

## FRONT EXPANSION SLOT OPTIONS

Front Expansion Slot

### Smart Card Reader

Part No: FZ-VSC551U



### Contactless Smart Card Reader

(HF-RFID)

Part No: FZ-VNF551U



### Finger Print Reader

Part No: FZ-VFP551U



### Battery Pack

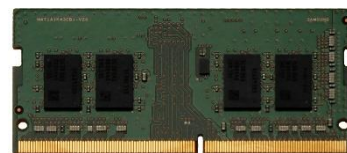
Common for standard battery.

Part No: FZ-VZSU1HU



## RAM Modules:

Option	SKU
8GB	FZ-BAZ2208
16GB	FZ-BAZ2216
32GB	FZ-BAZ2232



All technical specifications are subject to change without notice.

## REAR EXPANSION SLOT OPTIONS

Rear  
Expansion Slot

VGA + True Serial + USB  
3.1 Type A

Part No: FZ-VCN551U



VGA + True Serial +  
Gigabit LAN

Part No: FZ-VCN552U



VGA + True Serial +  
rugged USB 2.0

Part No: FZ-VCN553U



USB 3.2 Type A + USB 3.2  
Type c

Part No: FZ-VCN554W



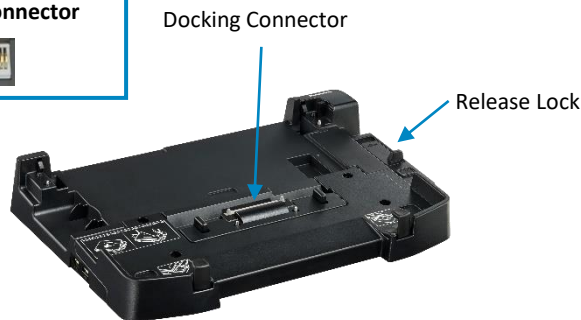
*All technical specifications are subject to change without notice.*

## DOCKING SOLUTIONS

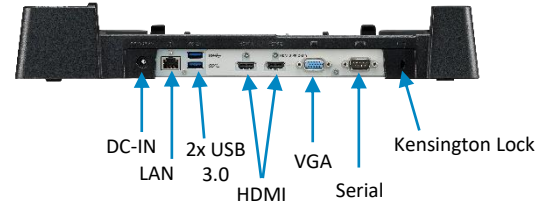
### TOUGHBOOK 55 Desktop Port Replicator

Part No: **FZ-VEB551U**

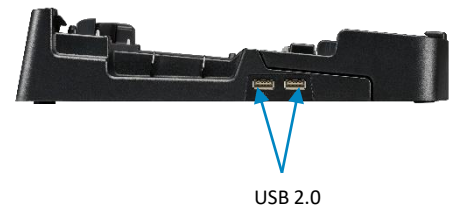
*CF-VEB541AU is also compatible with the TOUGHBOOK 55.*



Rear



Left



### TOUGHBOOK 54/55 Vehicle Dock (Gamber-Johnson)

Compatible with TOUGHBOOK 54 and TOUGHBOOK 55.

- Optional antenna pass-through
- Ports: 16V DC-in; 1 x LAN; 2 x USB 3.0; 1 x Serial; 1 x HDMI; 1 x VGA
- VESA 75mm mounting pattern
- Power supply not included

Size: 89 x 342 x 301 mm

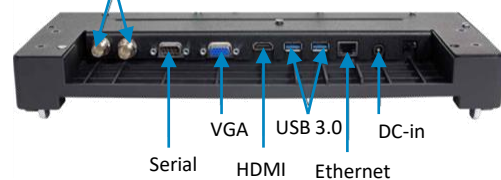
Weight: 2.5 kg

Part Nos:

- **PCPE-GJ54V01** No RF
- **PCPE-GJ54V02** Dual RF



Dual Antenna Pass-Through (TNC)



*All technical specifications are subject to change without notice.*

## CARRYING SOLUTIONS

### TOUGHBOOK 55 Always-On Case

Part No: PCPE-INF55AO



### User Harness

Adjustable four-point harness transforms any Always-On case into a hands-free accessory.

**Attaches to any TOUGHBOOK case that provides 4 attachment points**

Weight: 0.2 kg / 0.4 lb

Part No: PCPE-INFUVA1



*All technical specifications are subject to change without notice.*



## CONNECTIVITY

### Cradlepoint IBR 900 Router

Compact, ruggedized Gigabit-Class LTE router for advanced in-vehicle and IoT connectivity.

Dimensions: 118mm x 113.5mm x 30.5mm / 4.6" x 4.5" x 1.2"

Weight: 400g / 0.88 lb

Part Nos:

- **PCPE-CRD90E1** - Cradlepoint IBR900 router with 1-year NetCloud Mobile Essentials Plan
- **PCPE-CRD90E3** - Cradlepoint IBR900 router with 3-year NetCloud Mobile Essentials Plan
- **PCPE-CRD90E5** - Cradlepoint IBR900 router with 5-year NetCloud Mobile Essentials Plan
- **PCPE-CRD90A1** - Cradlepoint IBR900 router with 1-year NetCloud Mobile Advanced Plan
- **PCPE-CRD90A3** - Cradlepoint IBR900 router with 3-year NetCloud Mobile Advanced Plan
- **PCPE-CRD90A5** - Cradlepoint IBR900 router with 5-year NetCloud Mobile Advanced Plan



*All technical specifications are subject to change without notice.*

## POWER MANAGEMENT SOLUTIONS

### Main Battery

(6Cell, 68 Wh)

Part No: **FZ-VZSU1HU**



### AC Adaptor

Part No: **CF-AA5713A2\***

\*E: UK; G: EU; T: Italy; D: Switzerland



### 4-bay Battery Charger

Part No: **FZ-VCB551\***

Includes AC adaptor

\*E: UK; G: Continental; T: Italian



### Auto Adaptor (120W)

Part No: **CF-LND1224A**



### MIL SPEC Auto Adaptor (120W)

With bare wire input cable.

Part No: **PCPE-LND3676**



## PRODUCTIVITY SOLUTIONS

### TOUGHBOOK 55 Stylus

For Touchscreen model only.

Part No: **FZ-VNP551U**



### TOUGHBOOK 55 Tether

Part No: **FZ-VNT005U**



### Toughmate Stylus Tether

Part No: **PCPE-INFUVA2**



### USB Optical Mouse

Part No: **PCPE-LOGM901**



*All technical specifications are subject to change without notice.*

## SECURITY & PROTECTION SOLUTIONS

### LCD Screen Cleaning Cloth

Part No: **CF-VNC002U**

MOQ: 10 pcs



### Kensington Lock

Part No: **PCPE-KENLOK2**



## OTHER PERIPHERALS

### Slimline External CD/DVD Writer

Part No: **PCPE-FCDVR05**



*All technical specifications are subject to change without notice.*



## PROFESSIONAL SERVICES

### Custom BIOS Services

Part No: **PCPE-PSBIOSG**

### Autopilot Enrolment

Part No: **PCPE-PSAUTOP**

### SIM Installation

Part No: **PCPE-PSSIMIN**

### Information Management Bundle

IMEI, MAC, SIM, ASSET, Hardware Hash reporting.

Part No: **PCPE-PSATAGB**

### Solution Packaging

Up to 10 items packaged together in a box.

Does not include custom designed case.

Part No: **PCPE-PSSPACK**

### Custom Imaging

Part Nos:

- **PCPE-PS20GIM - Image deployment per device (MOQ 30)**
- **Custom Image Creation - Price on request.**

### Customer Branding

Logo badge on device casing or bezel.

Part No: **PCPE-PSLOGOB**

### Asset Tagging

Standard, using CPE label set.

Part No: **PCPE-PSATAG1**

*All technical specifications are subject to change without notice.*

## PROTECT FULL MAINTENANCE SERVICES



### ProTect PLUS

Every TOUGHBOOK is supported by our standard three year ProTect service, but ProTect PLUS is a value-packed upgrade, offering you extra peace of mind through the additional of the following services:

- Battery Confidence: proactive battery replacement (3 years only)
- Monthly service reporting on full estate of devices
- One working day of on-demand consultancy every year
- Full access to the TOUGHBOOK ServiceCloud Advanced Knowledge Base
- Remote technical support
- Full inspection report for returned devices
- Small, cosmetic repairs and reinstatement of IP integrity

SKU	Description
PCPE-PROTP3	TOUGHBOOK ProTect PLUS 3 Years (Incl. 3 yr Battery Confidence)
PCPE-PROTP4	TOUGHBOOK ProTect PLUS 4 Years (Incl. 3 yr Battery Confidence)
PCPE-PROTP5	TOUGHBOOK ProTect PLUS 5 Years (Incl. 3 yr Battery Confidence)



### ProTect PLUS Premium

For the ultimate protection, tailor your service plan by adding on any of the ProTect PLUS Premium modules below:

- Infinity Maintenance Service – *Infinity pricing all ProTect PLUS services. Other Premium modules below are priced on top of Infinity.*
- Remote Device Monitoring
- Self-Maintenance: Training & Spare Parts Access
- Return without SSD
- Global Service
- Device Management
- Software Maintenance
- Rapid Replacement
- Alternative Packaging

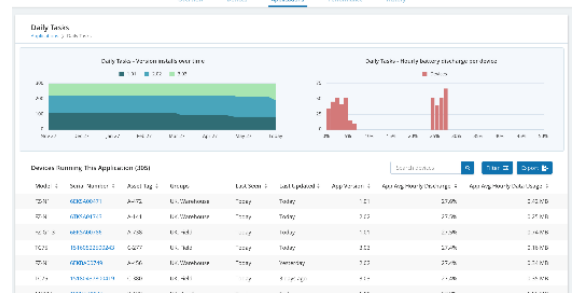
SKU	Description
PCPE-INFAB3	TOUGHBOOK Infinity 3 Years (Incl. 3 yr Battery Confidence)
PCPE-INFAB4	TOUGHBOOK Infinity 4 Years (Incl. 3 yr Battery Confidence)
PCPE-INFAB5	TOUGHBOOK Infinity 5 Years (Incl. 3 yr Battery Confidence)

# ENTERPRISE MOBILITY INTELLIGENCE



## TOUGHBOOK Smart Essentials Suite

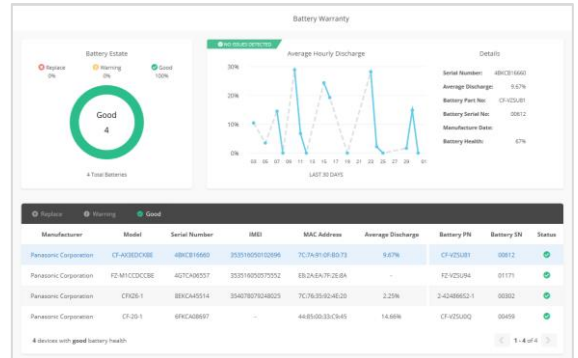
Real time analytics, powered by B2M Solutions, showing the health and performance of your estate of mobile devices, focussing on areas such as battery life, data usage, disruptions and connectivity. Enables the user to recognise patterns of usage and potentially pre-empt issues before they arise. The full suite includes access to the core dashboard as well as the Smart Battery Monitor dashboard, and APIs.



SKU	Description
CF-LESPSESS1	Smart Essentials Bundle - 1 year (Smart Service, Battery Monitor and APIs)
CF-LESPSESS3	Smart Essentials Bundle - 3 year (Smart Service, Battery Monitor and APIs)
CF-LESPSESS5	Smart Essentials Bundle - 5 year (Smart Service, Battery Monitor and APIs)

## Smart Battery Monitor

Smart Battery Monitor gives users real time insight into battery usage and health in detail cross an estate of devices. It focuses on battery serial numbers and allows the user to track, identify and replace batteries before they impact productivity. Alerts can also be set up.



SKU	Description
CF-LESPBAEE1	1 Year Smart Battery Monitor (Elemez Battery Essentials)
CF-LESPBAEE3	3 Year Smart Battery Monitor (Elemez Battery Essentials)
CF-LESPBAEE5	5 Year Smart Battery Monitor (Elemez Battery Essentials)

## SOFTWARE SOLUTION PARTNERS

### **ABSOLUTE**<sup>®</sup>

#### Cyber Resilience

Absolute is the industry benchmark in endpoint resilience. It ensures customers' digital operations and mobile workforces stay efficient, productive, and safe using innovative [Secure Endpoint](#) and [Secure Access](#) products—leveraging the advantage of pioneering Absolute Persistence<sup>®</sup> technology embedded in the firmware of more than 600,000,000 devices. Once activated, Absolute Persistence is fiercely and uniquely resilient, surviving attempts to disable it, even if the device is re-imaged, the hard drive is replaced, or the firmware is updated. **No other technology can do this.**

*Contact your sales rep for part numbers.*

Website: <https://www.absolute.com/partners/device-compatibility/#panasonic>

### **SOTI**<sup>®</sup>

#### Enterprise Mobility Management

Part of the [SOTI ONE Platform](#), SOTI MobiControl is the Enterprise Mobility Management (EMM) solution designed for any device, any form factor, and any operating system (OS). Deploy apps to smartphones. Enroll and provision new tablets in the field. Track the location of rugged devices. Identify and neutralize security risks to the IoT endpoints. Protect critical data stored on mobile devices. Minimize device downtime so field workers stay productive.

*Contact your sales rep for part numbers.*

Website: <https://www.soti.net/products/soti-mobicontrol/>



#### Sygic

Sygic Professional GPS Navigation works offline and features truck specific routing, itinerary with time windows and over 60 APIs for development with Android and Windows based apps. Sygic technology is accessible through a complete set of SDKs for web and mobile development. During Sygic's 18-year experience, we developed countless mapping and navigation solutions for 3000+ integration partners and customers in various industries.

*Contact your sales rep for part numbers.*

Website: <https://www.sygic.com/enterprise/professional-gps-navigation-sdk>

## ACCESSORY SUMMARY

Solution Type	Part Number	Description
Universal Bay Options	FZ-VSD55121U	256 GB 2 <sup>nd</sup> SSD
	FZ-VSD55151U	512 GB 2 <sup>nd</sup> SSD
	FZ-VSD551T1U	1 TB 2 <sup>nd</sup> SSD
	FZ-VSD55122U	OPAL 256 GB 2 <sup>nd</sup> SSD
	FZ-VSD55152U	OPAL 512 GB 2 <sup>nd</sup> SSD
	FZ-VSD551T2U	OPAL 1TB 2 <sup>nd</sup> SSD
	FZ-VDM551U	DVD Multi Drive
	FZ-VBD551U	Blu-ray Disc Drive
Front Expansion Slot Options	FZ-VSC552U	Smart Card Reader
	FZ-VSC551U	Smart Card Reader
	FZ-VNF551U	Contactless Smart Card Reader
	FZ-VFP551U	Finger Print Reader
Rear Expansion Slot Options	FZ-VZSU1HU	Battery Pack
	FZ-VCN551U	VGA x1, Serial x1, USB3.1 Type A x1
	FZ-VCN552U	VGA x1, Serial x1, 2nd Gigabit LAN x1
	FZ-VCN553U	VGA x1, Serial x1, Rugged USB x1(USB2.0)
RAM Modules	FZ-VCN554W	USB 3.2 Type A x1 + USB 3.2 Type c x1
	FZ-BAZ2208	8GB RAM
	FZ-BAZ2216	16 GB RAM
Docking Solutions	FZ-BAZ2232	32GB RAM
	FZ-VEB551U	TOUGHBOOK 55 Desktop Port Replicator
	PCPE-GJ54V01/2	TOUGHBOOK 54/55 Vehicle Dock (Gamber-Johnson)
Carry Solutions	PCPE-INF55AO	TOUGHBOOK 55 Always On Case
	PCPE-INFUVA1	User Harness
Power Management	FZ-VZSU1HU	Replacement Main Battery (6Cell, 68 Wh)
	FZ-VCB551* E/G/T	4-bay Battery Charger
	CF-AA5713A2*	AC Adaptor (*E: UK; G: Continental; T: Italian ; D: Swiss
	CF-LND1224A	Auto Adaptor (120W)
	PCPE-LND3676	MIL SPEC Auto Adaptor (120W)
Productivity	FZ-VNP551U	TOUGHBOOK 55 Touch Screen Stylus Pen
	FZ-VNT005U	Stylus Tether
	PCPE-INFUVA2	Toughmate Stylus tether
	PCPE-LOGM901	USB Optical Mouse
Connectivity	PCPE-CRD90E1	Cradlepoint IBR900 router with 1-year NetCloud Mobile Essentials
	PCPE-CRD90E3	Cradlepoint IBR900 router with 3-year NetCloud Mobile Essentials
	PCPE-CRD90E5	Cradlepoint IBR900 router with 5-year NetCloud Mobile Essentials
	PCPE-CRD90A1	Cradlepoint IBR900 router with 1-year NetCloud Mobile Advanced
	PCPE-CRD90A3	Cradlepoint IBR900 router with 3-year NetCloud Mobile Advanced
PCPE-CRD90A5	Cradlepoint IBR900 router with 5-year NetCloud Mobile Advanced	

All technical specifications are subject to change without notice.



## ACCESSORY SUMMARY

Solution Type	Part Number	Description
<b>Security, Protection &amp; Cleaning</b>	PCPE-KENLOK2	Kensington Lock
	CF-VNC002U	LCD Cleaning Cloth (MOQ: 10pcs)
<b>Peripherals</b>	PCPE-FCDVR05	USB External CD-DVD Drive
<b>Professional Services</b>	PCPE-PSBIOSG	Custom BIOS Service – Gold
	<b>PCPE-PS20GIM</b>	Image deployment per device (MOQ 30)
	PCPE-PSSIMIN	SIM Installation
	PCPE-PSATAG1	Asset Tagging
	PCPE-PSATAGB	Information Management Bundle
	PCPE-PSAUTOP	Autopilot Enrolment
	PCPE-PSLOGOB	Custom logo badge
	PCPE-PSSPACK	Solution Packaging
<b>Smart Services</b>	PCPE-PSBTM01	Bespoke Training Material
	CF-LESPSESS1	Smart Essentials Bundle - 1 year (Smart Service, Battery Monitor and APIs)
	CF-LESPSESS3	Smart Essentials Bundle - 3 year (Smart Service, Battery Monitor and APIs)
	CF-LESPSESS5	Smart Essentials Bundle - 5 year (Smart Service, Battery Monitor and APIs)
	CF-LESPBAEE1	1 Year Smart Battery Monitor (Elemesz Battery Essentials)
	CF-LESPBAEE3	3 Year Smart Battery Monitor (Elemesz Battery Essentials)
CF-LESPBAEE5	5 Year Smart Battery Monitor (Elemesz Battery Essentials)	
<b>Lifecycle support solutions</b>	PCPE-PROTP3	TOUGHBOOK ProTect PLUS 3 Years (Incl. 3 yr Battery Confidence)
	PCPE-PROTP4	TOUGHBOOK ProTect PLUS 4 Years (Incl. 3 yr Battery Confidence)
	PCPE-PROTP5	TOUGHBOOK ProTect PLUS 5 Years (Incl. 3 yr Battery Confidence)
	PCPE-INFAB3	TOUGHBOOK Infinity 3 Years (Incl. 3 yr Battery Confidence)
	PCPE-INFAB4	TOUGHBOOK Infinity 4 Years (Incl. 3 yr Battery Confidence)
	PCPE-INFAB5	TOUGHBOOK Infinity 5 Years (Incl. 3 yr Battery Confidence)

Panasonic and Toughbook are brand names and registered trademarks of Panasonic Corporation. Intel, the Intel logo, Intel Core, Intel vPro, Core Inside and vPro Inside are trademarks of Intel Corporation in the U.S. and other countries. Microsoft® and Windows® are registered trademarks of Microsoft® Corporation of the United States and/or other countries. All rights reserved. All other brand names shown are the registered trademarks of the relevant companies.

Mobile Solutions Business Division – Europe (MSBDEU), Panasonic Connect Europe GmbH, Hagenauer Straße 43, D-65203 Wiesbaden (Germany).