

Kit Contents

I-Series 4 USB-C Display
I/O Hub
DC Power Supply
Cable lock bracket and screw



Quick Installation Guide

I-Series 4 Slate

Elo Touch Solutions Technical Support

Online self-help: www.elotouch.com/support

Revision B
P/N E232026

America

800-ELO-TOUCH
Tel +1 408 597 8000
EloSales.NA@elotouch.com

Asia-Pacific

Tel +86 (21) 3329 1385
EloAsia@elotouch.com

Europe(EMEA)

Tel +32 16 930 136
EMEA.Sales@elotouch.com

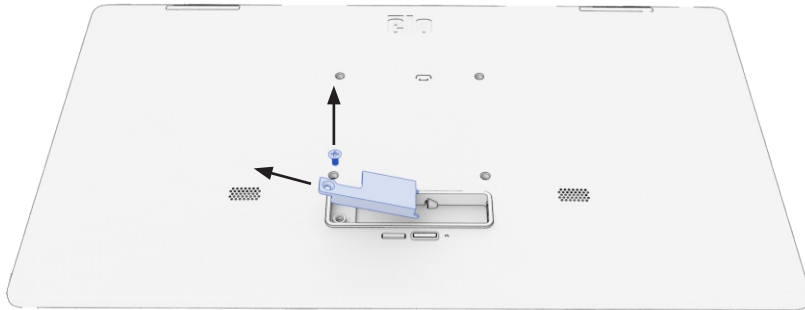
The information in this document is subject to change without notice. Elo Touch Solutions, Inc. and its Affiliates (collectively "Elo") makes no representations or warranties with respect to the contents herein, and specifically disclaims any implied warranties of merchantability or fitness for a particular purpose. Elo reserves the right to revise this publication and to make changes from time to time in the content hereof without obligation of Elo to notify any person of such revisions or changes.

No part of this publication may be reproduced, transmitted, transcribed, stored in a retrieval system, or translated into any language or computer language, in any form or by any means, including, but not limited to, electronic, magnetic, optical, chemical, manual, or otherwise without prior written permission of Elo Touch Solutions, Inc.

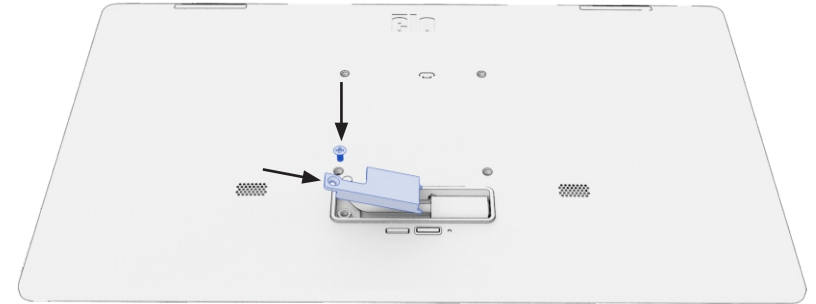
Elo and the Elo logo are either trademarks or registered trademarks of Elo Touch Solutions, Inc.



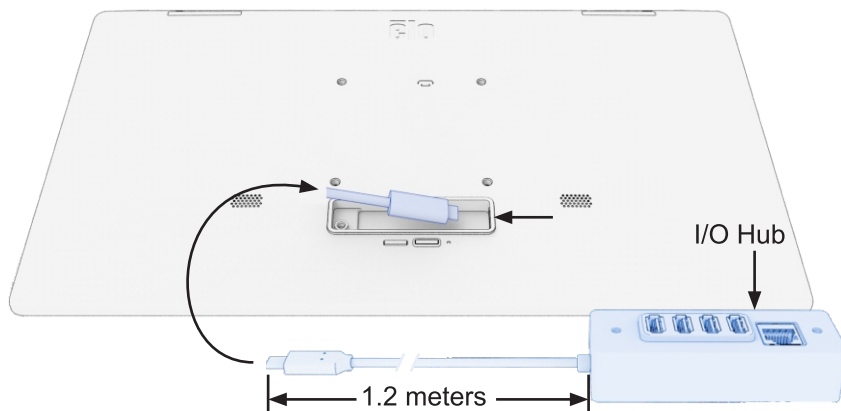
- 1** Remove the cable locking screw and bracket from the rear of the I-Series4 Slate display to access the USB-C connection.



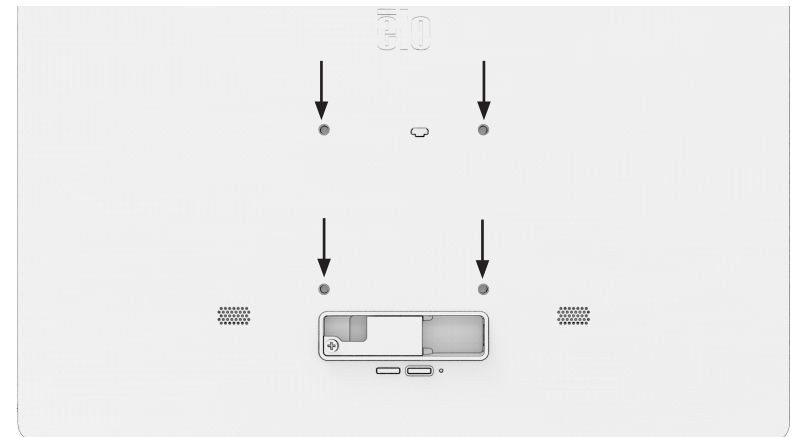
- 3** Reinstall the cable locking screw and bracket on the rear of the I-Series 4 Slate display. The bracket slides in at an angle and has two small hooks that engage with slots inside the cable cavity. The bracket must be secured with the included screw.



- 2** Plug the USB-C cable from the I/O hub to the rear of the I-Series 4 Slate display.



- 4** Secure the USB-C cable on the back of the I-Series 4 Slate display with the cable security bracket. The I/O hub has two threaded mounting holes which allow it to be mounted out of site. See dimensional drawing for mounting hole details.



See detailed user guide at www.elotouch.com for additional information on mounting Elo I-Series 4 Slate display to Elo stands or wallmounts.