

GETAC T800 ACCESSORY SPEC BROCHURE

T800

Fully Rugged
Tablet



Always Ready Always Rugged

HAND STRAP

Features & Benefits

The adjustable strap is designed to keep the T800 secured to user's hand and easier to carry.

Product Information

Main part : 163.3 x 87.1 mm

Belt parts : 55mm (upper) ; 120mm (lower)

Main Material : PU

SKU ID

SKU ID : GMHSX9

Product Photo



SHOULDER STRAP 2-Point

Features & Benefits

The 2-point shoulder strap provides a quick and comfortable handsfree carrying option of the T800. The strap length is adjustable by using the slide adjusters for height. Also, it fits most body sizes for both cross-body and shoulder carry.

Product Information

Length : 1740mm

Main Material : Nylon

SKU ID

SKU ID : GMS2X2

Product Photo



WRIST STRAP

Features & Benefits

This wrist strap is designed to prevent accidental drops and provide extra hand support and stability while holding the T800 tablet with one hand.

Product Information

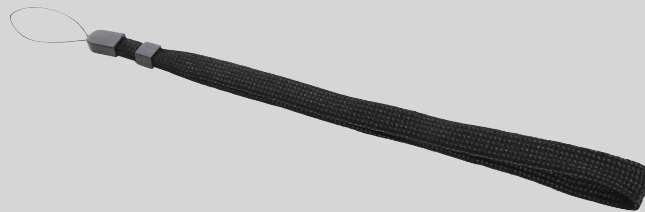
Length : 257mm

Material : Polyester

SKU ID

SKU ID : GMRSX1

Product Photo



OFFICE DOCK with AC Adapter

Features & Benefits

The Getac office dock brings out multiple I/O ports for connecting essential peripheral devices in the office environment. Through the integrated ethernet, HDMI, or USB connections, users can quickly collect and synchronize field data with central offices for real-time reporting and analytics.

Product Information

Dimension :

215mm x 170mm x 205mm

Weight : 1000g

Docking Connector : POGO

* w / 90W AC Adapter

I / O Ports :

DC in Jack x 1

Audio Output x 1

USB 2.0 x 3

USB3.0 x 1

VGA x 1

LAN x 1

HDMI x 1

Microphone x 1

Kensington Lock x 1

SKU ID

SKU ID : GDOF*Y

* EU = E, US = U, UK = K, AU = A, PR = C,
TW = T - Power cords

Product Photo



65W AC ADAPTER with Power Cord

Features & Benefits

This adapter is designed to power the device and charge its internal battery from an AC power source. A country-specific power cord is included with the adapter to fit the local power outlet in your designated country.

Product Information

Input : 100V-240V, 50~60Hz, 1.5A
Output : 19V, 3.42A, 65W

Dimensions :

L 108.3 x W 46.3 x H 30mm

Weight : 250g

Input cable length : 1830mm

Output cable length. : 1500mm

SKU ID

SKU ID : GAA6*5

* EU = E, US = U, UK = K, AU = A,
PR = C, TW = T - Power cords

Product Photo



120W VEHICLE ADAPTER

Features & Benefits

The 120W vehicle adapter comes with a choice of two types of connections: a bare wire with individual wire ends already stripped, and a cigarette lighter plug for easy connection to the cigarette lighter socket in the vehicle interior, providing a convenient way to charge and power your tablet while you are on the road.

Product Information

Input Voltage : 11VDC~32VDC

Output Voltage : 19VDC

Output current : 6.32A Max.

Case Dimensions :

L 131.5 x W 65.6 x H 30mm

Weight : 362g

Input cable length : 1900mm

Output cable length : 1000mm

SKU ID

SKU ID : GAD2X4

(Cigarette Lighter Plug Version)

GAD2X8 (Bare Wire Version)

Product Photo



Cigarette Lighter Plug Version



Bare Wire Version

CARRY BAG

Features & Benefits

Constructed of durable Nylon/air mesh fabric, and featuring an adjustable padded shoulder strap, this compact carry bag provides sturdy protection for your T800 tablet while giving maximum comfort.

The zippered compartments with multi-functional pockets inside offer the optimal solution to transport the tablet and all of its accessories together in one case, delivering extra convenience and go-anywhere productivity to mobile professionals.

Product Information

Dimensions :

L 255 x W 230 x H 123mm

Weight : 560g

Main Materials : Nylon, air mesh fabric

SKU ID

SKU ID : GMBCX3

Product Photo



CAPACITIVE STYLUS & TETHER

Features & Benefits

This capacitive stylus is lightweight and easy to control, allowing smooth and comfortable interaction with the touch screen without worrying about scratching the screen or leaving fingerprints on it. The stylus comes with a detachable stylus holder for convenient storage and carrying of it, as well as a tether to keep the stylus attached to the tablet, so it doesn't get lost or misplaced.

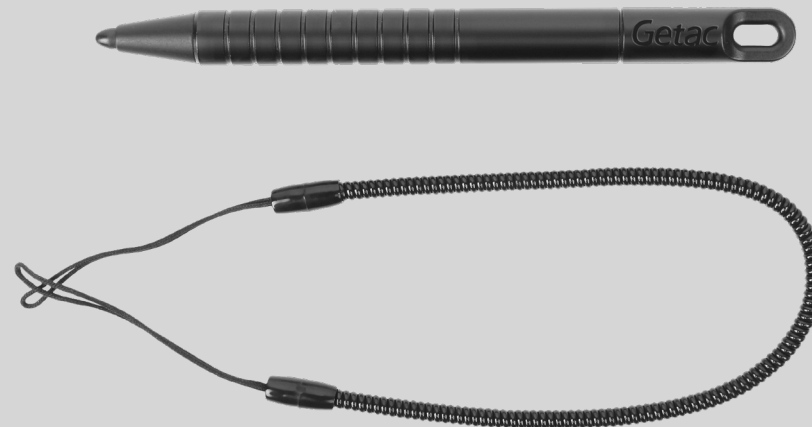
Product Information

Stylus Dimensions :
107.5mm ; Ø9mm
Tip size : 3.8mm ; Ø3.5mm
Tether Length : 304mm

SKU ID

SKU ID : GMPSXG

Product Photo



DIGITIZER PEN

Features & Benefits

The digitizer pen provides a more accurate and easy way for data entry and handwritten signature. A shortcut button allows the right mouse button functionality when using the pen.

Product Information

Stylus Dimensions :
107.5 x 9.8 mm (Max.) ; Ø9.0mm
Tip size : 2.5mm ; Ø1.7mm
Tether Length : 304mm

SKU ID

SKU ID : GMPDX2

Product Photo



PROTECTION FILM AG

Features & Benefits

This screen protection film is cut precisely to fit the T800 tablet and is easy to install and remove without leaving a sticky residue. With anti-glare coating, it not only protects the screen from the rigors of daily use but also helps to diffuse light on the screen and reduces glare, providing effortless readability for displayed information under common ambient lighting conditions.

Product Information

Dimensions :

L 198.2 x W 140.2 x D 0.152mm

Main Material : PET

SKU ID

SKU ID : GMPFX8

Product Photo



SNAPBACK-EXTENSION BATTERY

Features & Benefits

This second battery pack is a snap-on module to provide T800 with extra battery power. The battery pack itself has an LED to display the estimated battery charge.

Users can press the button to see the number of segments that light green.

Product Information

Battery Type : Lithium-ion
Nominal Voltage : 14.8V
Typical Capacity : 2100 mAh
Battery Pack Weight : 285g

SKU ID

SKU ID : GBS4X1

Product Photo



SNAPBACK-SMARTCARD AND HF RFID READER RFID/NFC Combo

Features & Benefits

This snap-on module is a 2-in-1 card reader that can read, Smart cards, (NFC) Near Field Communication and RFID (Radio-frequency identification) tags of 14443-A, 14443-B, and 15693 types

Product Information

Dimension : 195 x 150mm

Weight : 150g

Thickness : 14.5mm

SKU ID

SKU ID : GORSX2

Product Photo



SNAPBACK-SMARTCARD & MAGNETIC STRIP READER

Features & Benefits

This snapback with MSR is designed for access control applications. With simple installation, users can easily snap on the accessory.

Moreover, this accessory has an IP65 rating, which means the snapback can be operated even in rain conditions.

Product Information

Dimension : 195 x 150mm

Weight : 175g

Thickness : 19mm

SKU ID

SKU ID : GOMSX1

Product Photo



SNAPBACK-SMART CARD & UHF RFID READER

Features & Benefits

This snap on module is a 2-in-1 card reader that can read: Smart cards, UHF RFID tags of EPC Class 1 Gen2 ISO18000-63 standards. It comes in two models for different regions: US (902~928MHz) and EU (865~868MHz)

The UHF antenna is located at the center of the module. The maximum reading distance is determined by the design and size of individual tags.

Product Information

Dimension : 195 x 150mm

Weight : 215g

Thickness : 34mm

SKU ID

SKU ID : GORSX3 (US only)

GORSX4 (EU only)

Product Photo



EXTERNAL DUAL BAY MAIN BATTERY CHARGER

Features & Benefits

This external dual-bay main battery charger is designed to charge up to 2 main batteries at the same time. It provides you the benefit of charging and storing the 2 main batteries together when there is limited space or power sockets.

Product Information

Dimension : L 160 x W 180 x H 72.5mm

Weight : 1.2kg

Number of LEDs : 5 per bay

AC-in power 100 V~240 V

DC Output 13.05 V, 2.4 A Max.

Number of charge bays : 2 bays

SKU ID

SKU ID : GCMC*5

* EU = E, US = U, UK = K, AU = A,
PR = C, TW = T - Power cords

Product Photo



MULTI-BAY EXPANDED BATTERY DOCK 6 Bay

Features & Benefits

The 6-bay multi-battery dock is designed to charge multiple battery packs simultaneously and provide users an efficient charging solution.

Product Information

Dimension : L 465 x W 245 x H 162.5mm

Weight : 6.5kg (14.4lbs), not including battery packs

AC-in power 100 V~240 V ; 50~60Hz ; 4.5A

DC Output 19 V, 1.5~14.5 A

Number of charge bay : 6 Bay

SKU ID

SKU ID : GC6C*1

* EU = E, US = U, UK = K, AU = A

- Power cords

Product Photo



MULTI-BAY EXPANDED BATTERY CHARGER 8 Bay

Features & Benefits

The 8-bay multi-battery charger is designed to charge multiple battery packs simultaneously and provide users an efficient charging solution.

Product Information

Dimension :

L 465 x W 245 x H 95.3~111.3mm

Weight : 4.7 kg ,not including battery packs

AC Input : 100V~240V AC, 4.2A
50~60Hz

DC Output : 19.5V, 16.9A

* w / 330W AC Adapter

Number of charge bays : 8 bays

SKU ID

SKU ID : GCEC*B

* EU = E, US = U, UK = K, AU = A,
CN = C - Power cords

Product Photo



MAIN BATTERY

Features & Benefits

The T800 Main Battery is designed to provide a main power source for the device when the AC adapter is not connected/charged. The battery icon at the back of the battery pack changes appearance to display the current state of the battery. When the battery is low, it alerts users to take action as a reminder to help maintain optimal battery performance.

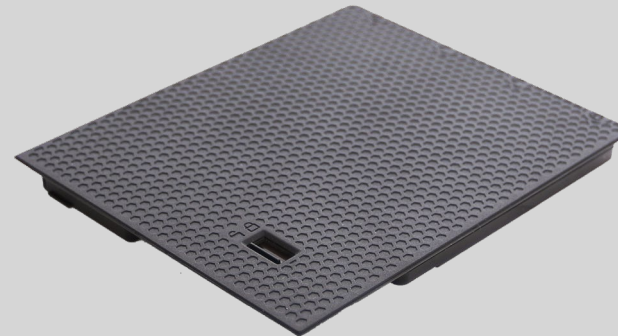
Product Information

Battery Type : Lithium-ion
Capacity : 7.4V, 4100mAh
(31.08 Wh)
Battery Pack Weight : 215g

SKU ID

SKU ID : GBM4X1

Product Photo



GETAC T800-Ex ACCESSORY SPEC BROCHURE



T800-Ex

Fully Rugged
Tablet

Always Ready Always Rugged

65W AC ADAPTER with Power Cord

Features & Benefits

This adapter is designed to power the device and charge its internal battery from an AC power source. A country-specific power cord is included with the adapter to fit the local power outlet in your designated country.

Product Information

Input : 100V-240V, 50~60Hz, 1.5A
Output : 19V, 3.42A, 65W

Dimensions :

L 108.3 x W 46.3 x H 30mm

Weight : 250g

Input cable length : 1830mm

Output cable length. : 1500mm

SKU ID

SKU ID : GAA6*5

* EU = E, US = U, UK = K, AU = A,
PR = C, TW = T - Power cords

Product Photo



CAPACITIVE STYLUS & TETHER

Features & Benefits

This capacitive stylus is lightweight and easy to control, allowing smooth and comfortable interaction with the touch screen without worrying about scratching the screen or leaving fingerprints on it. The stylus comes with a detachable stylus holder for convenient storage and carrying of it, as well as a black tether to keep the stylus attached to the tablet, so it doesn't get lost or misplaced.

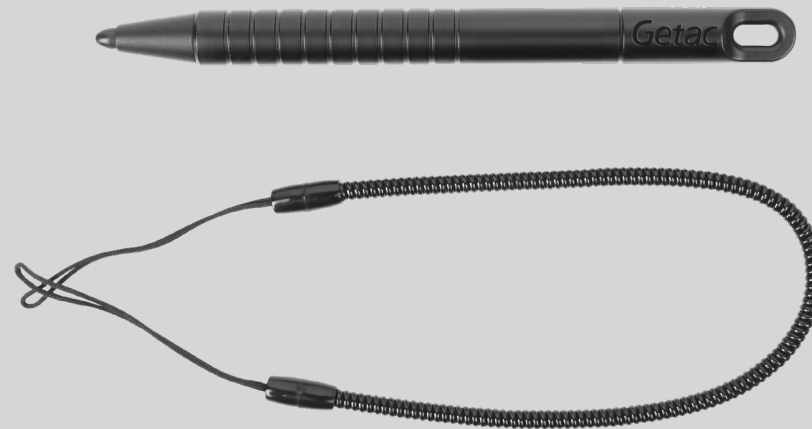
Product Information

Stylus Dimensions :
107.5mm ; Ø9mm
Tip size : 3.8mm ; Ø3.5mm
Tether Length : 304mm

SKU ID

SKU ID : GMPSXG

Product Photo



DIGITIZER PEN

Features & Benefits

The digitizer pen provides a more accurate and easy way for data entry and handwritten signature. A shortcut button allows the right mouse button functionality when using the pen.

Product Information

Stylus Dimensions :
107.5 x 9.8 mm (Max.) ; Ø9.0mm
Tip size : 2.5mm ; Ø1.7mm
Tether Length : 304mm

SKU ID

SKU ID : GMPDX2

Product Photo



SNAPBACK-EXTENSION BATTERY

Features & Benefits

This second battery pack is a snap-on module to provide T800 with extra battery power. The battery pack has a light green LED display to estimate your battery charge. With a press of a button, users can check the remaining battery capacity through the number of LED bars that light up.

Product Information

Battery Type : Lithium-ion
Nominal Voltage : 14.8V
Typical Capacity : 2100 mAh
Battery Pack Weight : 285g

SKU ID

SKU ID : GBS4X1

Product Photo



MAIN BATTERY

Features & Benefits

The T800 Main Battery is designed to provide a main power source for the device when the AC adapter is not connected / charged. The battery icon at the back of the battery pack changes appearance to display the current state of the battery. When the battery is low, it alerts users to take action as a reminder to help maintain optimal battery performance.

Product Information

Battery Type : Lithium-ion
Capacity : 7.4V, 4100mAh
(31.08 Wh)
Battery Pack Weight : 215g

SKU ID

SKU ID : GBM4X1

Product Photo

