

CITIZEN

Designed and built for performance

Fast, simple, stylish label printing

Thermal Transfer with easy media access



Stylish, Fast and Compact

The CL-E321's compact, modern, functional design takes up very little desk space, is easy to use and is also perfectly at home in any location, from warehouses to hospitals. It also has a fast print speed of 8 inches-per-second, is quick to setup and to load with media.

Well connected

The CL-E321 features on-board LAN, USB and Serial interfaces. All industry-standard emulations are fully supported, with the option of remote operation via a web browser, using the Citizen LinkServer™ management tool.

Easy operation

The CL-E321 is simple to use and intuitive, ensuring users waste no time when changing labels or adjusting settings.

CITIZEN CL-E321

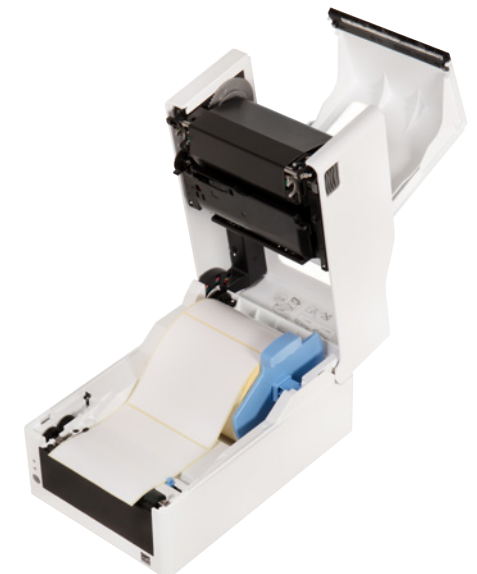
LABEL

Applications

- Courier & Logistics
- Light manufacturing
- Asset labels & rating plates
- Medical
- Garden tags and labels

Easier ribbon change

The CL-E321 has a wide opening (180°) Hi-Lift™ case, and uses full size, 300m ribbons with standard 127mm cores. Media loading is simplified still further through the use of innovative ribbon holders, with a ClickClose™ closure mechanism ensuring complete reliability.





Ethernet LAN, USB & Serial interfaces as standard

Specifications

| Model | CL-E321 Series |
|------------------------------|---|
| Printing technology | Thermal Transfer and Direct Thermal |
| Resolution | 203 dpi (300 dpi on CL-E331) |
| Print Speed (maximum) | 8 inches per second (200 mm/s) at 203 dpi; 6 IPS at 300 dpi. |
| Print Width (maximum) | 4.1 inches (104 mm) |
| Media Width (min to max) | 0.94 inches to 4.65 inches (24 mm to 118 mm) |
| Media Thickness (min to max) | 63.5 µm – 190 µm, 0.0025 to 0.0075 inches |
| Media Sensor | Adjustable gap & black mark sensors |
| Media Length (min to max) | 6.4 – 2540 mm, 0.25 – 100 inches depending on emulation and resolution |
| Media Roll Size, Core Size | Up to 5 inches (125mm). Core 1 to 1.5 inches (25-38mm) |
| Standard interfaces | 10/100 Ethernet (LAN) with LinkServer™, USB 2.0, Serial RS232C |
| Control Languages | Cross-Emulation™ - automatically switching between Zebra® ZPL-II® and Datamax®. CBI Basic Interpreter for programmers. EPL emulation coming soon. |
| Case | Hi-Open™ plastic case with ClickClose™ Black and Pure White case colours |
| Control Panel | Feed/Setting button and two LEDs (Power & Status) |
| Memory configuration | 16MB Flash (User area 4MB), 32MB SDRAM (User area 4MB) |
| Drivers and software | Free-of-charge with printer, supporting Windows® 7, 8.1, 10, 2008R2, 2012, 2016, Linux and many others |
| Size (W x D x H) and Weight | 178 x 266 x 173 mm, 7.0 x 10.5 x 6.8 inches; 2.60 Kgs, 5.73 lbs (AC adapter, 0.36 Kgs, 0.79 lbs) |
| Power consumption | 110 to 240 VAC (90 to 264 VAC), 50 to 60 Hz, 60W typical power consumption when printing DOE VI / COC Tier 2 compliant (less than 0.15W no-load consumption) |
| Printer, Head Warranty | 2 Years for Printer; 50 Kms/6 months on head |

All product names are trademarks of the respective manufacturers. Zebra®, ZPL and EPL are trademarks of ZIH Corp. Datamax® is a trademark of Datamax-O'Neil Corporation. Designs, specifications and availability are subject to change without notice. Errors and omissions excluded. © Citizen Systems Europe GmbH, V.1.0

CITIZEN CL-E321

LABEL

Features & Benefits

- Quick and easy ribbon change and media loading
- Compact size, stylish design and small footprint
- One minute, tool-free maintenance: both head and platen can be replaced without tools
- Hi-Lift™ mechanism and ClickClose™ closure
- Upper & lower tear bar
- Adjustable media sensor as standard with label gap and black mark sensing
- Integral LinkServer™ web management enables easy operation and remote management of the printer
- Black or white case colours suitable for a wide variety of environments.

