

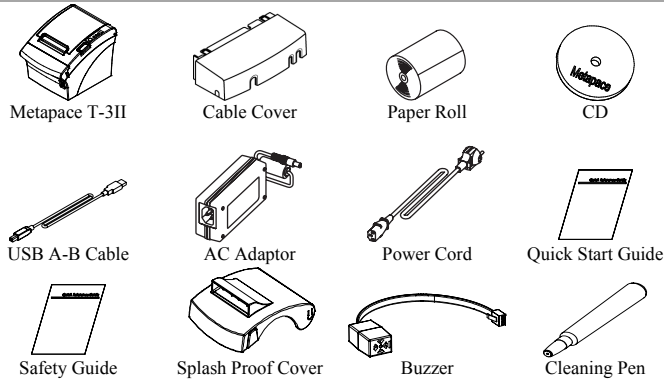
Information

This Installation Guide includes a brief outline of information necessary for product installation. For more detailed installation information, please refer to the user manual in the enclosed CD. The contents of the CD include the following.

1. Manual: User Manual, Code Chart, Control Commands
2. Drivers: Windows Drivers, OPOS Drivers
3. Utilities: a logo download tool

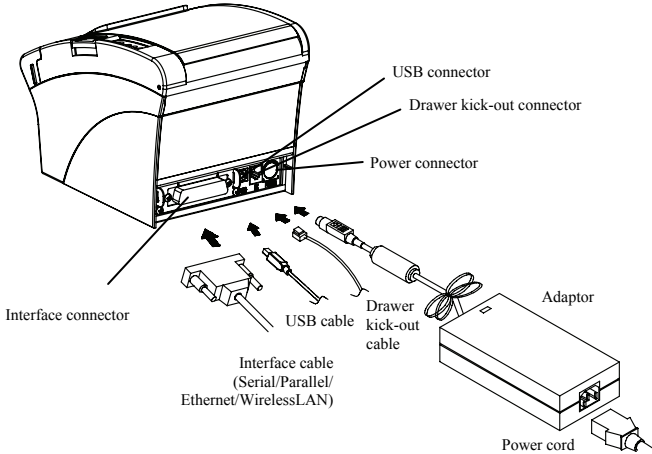
We at Metapace maintain ongoing efforts to enhance and upgrade the functions and quality of all our products. In following, product specifications and/or user manual content may be changed without prior notice.

Components

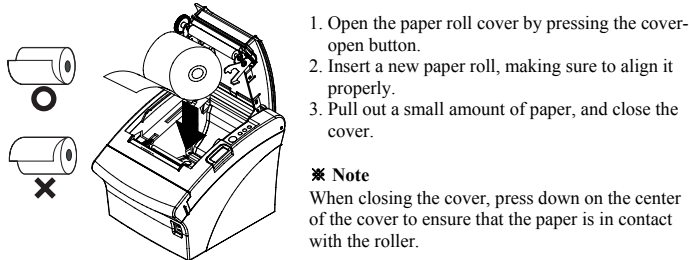


Connecting the Cables

1. Turn off the printer and the host ECR (host computer).
2. Plug the power cord into the Adaptor, and then plug the Adaptor into the power connector of the printer.
3. Check the interface cable (Serial, Parallel, USB, Ethernet or Wireless LAN), and connect the interface connector cable accordingly.
4. Plug the drawer kick-out cable into the drawer kick-out connector on the printer.



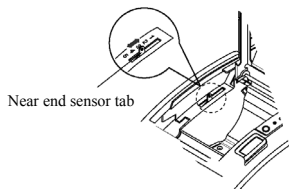
Installing the Paper Roll



1. Open the paper roll cover by pressing the cover-open button.
2. Insert a new paper roll, making sure to align it properly.
3. Pull out a small amount of paper, and close the cover.

*** Note**
When closing the cover, press down on the center of the cover to ensure that the paper is in contact with the roller.

* Note: Adjusting the Paper Near-End Sensor



The Metapace T-3II has a paper near-end sensor that provides notice that the paper roll is nearly exhausted. When the paper is running low, the lamp on the apparatus is lit red. If the lamp is activated even when sufficient paper remains, adjust the near-end sensor setting by pushing the tab upward towards 1.

Paper Jam

(Refer to 1-6 in User Manual)

1. Turn the power of the printer off or on and open the cover to remove the paper.
2. If the cover is not opened, turn off the power of the printer and separate the cover-cutter and then turn the knob of the auto cutter to open the cover.

Using the Operation Panel

- **POWER (LED)**
When turning on the power, a green LED will be lit.
- **ERROR (LED)**
When an error occurs, a red LED will be lit. (e.g. no paper, cover ajar, etc.)
- **PAPER (LED)**
Red LED will be lit when the paper roll is running low. The LED blinks when the printer is in self-test standby mode or macro execution standby mode.
- **FEED (Button)**
Press the FEED button once to discharge extra paper. Holding down the FEED button will discharge paper continuously until the button is released.

Setting the Dip Switches

Changing Dip Switch settings must be done when the printer is off. Any changes done while the printer is on will not be processed.

1. Serial Interface

• DIP Switch 1

SW	Function	ON	OFF	Default
1-1	Auto Line Feed	Enable	Disable	OFF
1-2	Flow Control	XON/XOFF	DTR/DSR	OFF
1-3	Data Length	7 bits	8 bits	OFF
1-4	Parity Check	Yes	No	OFF
1-5	Parity Selection	EVEN	ODD	OFF
1-6	Baud rate Selection (bps)	Refer to the following Table 1		OFF
1-7			ON	
1-8			OFF	

• DIP Switch 2

SW	Function	ON	OFF	Default
2-1	Reserved	-	-	OFF
2-2	Reserved	-	-	OFF
2-3	Internal Bell Control	Disabled	Enabled	OFF
2-4	Auto Cutter Selection	Disabled	Enabled	OFF
2-5	Print Density	Refer to the following table 2		OFF
2-6			OFF	
2-7	Near End Sensor Control	Disabled	Enabled	OFF
2-8	Auto External Buzz	Enabled	Disabled	OFF

2. Parallel / USB / Ethernet / Wireless LAN Interface

• DIP Switch 1

SW	Function	ON	OFF	Default
1-1	Auto Line Feed	Enable	Disable	OFF
1-2	Reserved	-	-	OFF
1-3	Reserved	-	-	OFF
1-4	Reserved	-	-	OFF
1-5	Reserved	-	-	OFF
1-6	Reserved	-	-	OFF
1-7	Reserved	-	-	ON
1-8	Reserved	-	-	OFF

• DIP Switch 2

SW	Function	ON	OFF	Default
2-1	Reserved	-	-	OFF
2-2	Reserved	-	-	OFF
2-3	Internal Bell Control	Disabled	Enabled	OFF
2-4	Auto Cutter Selection	Disabled	Enabled	OFF
2-5	Print Density	Refer to the following table 2		OFF
2-6			OFF	
2-7	Near End Sensor Control	Disabled	Enabled	OFF
2-8	Auto External Buzz	Enabled	Disabled	OFF

• Table 1 – Baud Rate (bps) Selection

Transmission Speed	1-6	1-7	1-8	Default
2400	ON	OFF	OFF	9600
4800	ON	OFF	ON	
9600	OFF	ON	OFF	
19200	OFF	OFF	OFF	
38400	OFF	ON	ON	
57600	OFF	OFF	ON	
115200	ON	ON	ON	

• Table 2 – Print Density Selection

Print Density	2-5	2-6	Default
Level 1	OFF	OFF	- Level 1 is default - Level 4 is darkest
Level 2	ON	OFF	
Level 3	OFF	ON	
Level 4	ON	ON	

◆ Self -Test

1. Make sure the paper roll has been installed properly.
2. Turn on the power while holding down the FEED button. The self-test begins.
3. The self-test prints the current printer status, providing the control ROM version and the DIP switch setting.
4. After printing the current printer status, self-test printing will print the following, and pause. (The PAPER LED light blinks.)

SELF-TEST PRINTING.
PLEASE PRESS THE FEED BUTTON.

5. Press the FEED button to continue printing. The printer prints a pattern using the built-in character set.
6. The self-test automatically ends and cuts the paper after printing the following.
*** COMPLETED ***
7. After the self-test is complete, the printer returns to normal on-line status.

※ Note

The self-test lets you know if your printer is operating properly. It checks the print quality, ROM version, and DIP switch settings.

◆ Specifications

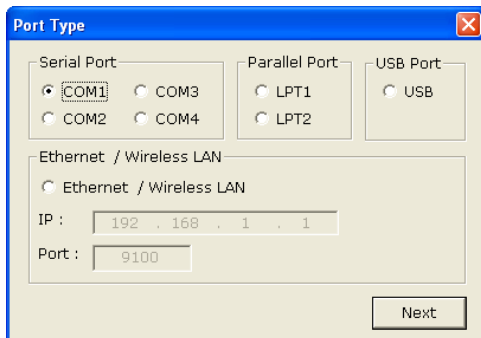
	Item	Details
Printer	Printing Method	Thermal Line Printing
	Dot Density	180 dpi (7dots/mm)
	Printing Width	72 mm
	Characters per line (default)	42 (Font A) 56 (Font B) 56 (Font C)
	Printing Speed *1)	Max. 250 mm/sec
	Receive Buffer Size	4K Bytes
	SMPS Input Voltage	100~240 VAC
	Frequency	50/60 Hz
	SMPS Output Voltage	24 VDC
	Temperature	0~45 ℃ (Operating) -20~60 ℃ (Storage)
	Humidity	10~80 % RH (Operating) 10~90 % RH (Storage) Except for paper
	Mechanism Head Life *2)	150 Km
	Auto Cutter	1,800,000 Cuts
Mechanism MCBF *2)	70,000,000 Lines	
Paper	Paper Type	Paper Roll
	Roll Width	79.5±0.5 mm
	Roll Diameter	Max 83 mm
	Paper Thickness	0.062~0.075 mm
	Paper Tube	Inner: Ø12 mm (0.47") Outer: Ø18 mm (0.71")

※ Note

- *1) Printing speed may be slower depending on the data transmission speed and the combination of control commands.
- *2) The specifications were determined based on operation at normal temperature using designated paper on default settings. They are subject to change depending on temperature or printing level.

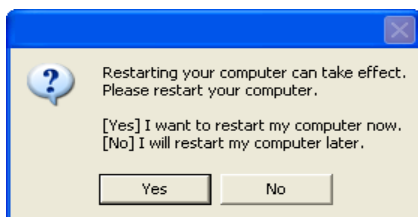
◆ Serial (RS-232C) Fixed Interface Model Windows Driver Installation

1. Run T-3II_WIN_Vx.x.x.exe
2. Click **Next** at the initial installation window.
3. Select **one of Serial Ports** in the **Port Type** window and then click **Next**.



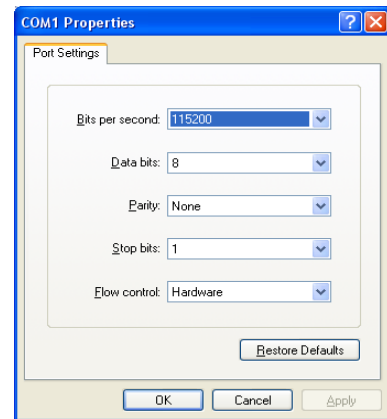
< Figure 1.>

4. Click **Yes** and then restart the computer.



< Figure 2>

5. After restarting, move to the following route to see the set printer properties:
 - ※ Windows XP: Select **Control Panel > Printer and Fax > Metapace T-3II Icon > Right Mouse Button > Properties**.
 - ※ Windows Vista or higher version: Select **Control Panel > Hardware and Sound > Device and Printer > Metapace T-3II Icon > Right Mouse Button > Printer Properties**.
6. After selecting the **Port** tab in the **Properties** window and selecting **Port Configuration** and then setting it as same as the self-test result, click **OK**.

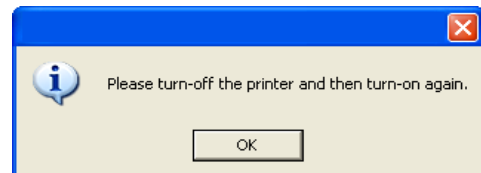


◆ Parallel (IEEE1284) Fixed Interface Model Windows Driver Installation

1. Run T-3II_WIN_Vx.x.x.exe.
2. Click **Next** at the initial installation window.
3. Select **one of Parallel Ports** in the **Port Type** window and then click **Next** (Refer to Fig. 1.).
4. Click **Yes** and then restart the computer (Refer to Fig. 2).
5. After restarting, move to the following route to see the set printer properties:
 - ※ Windows XP: Select **Control Panel > Printer and Fax > Metapace T-3II Icon > Right Mouse Button > Properties**.
 - ※ Windows Vista or higher version: Select **Control Panel > Hardware and Sound > Device and Printer > Metapace T-3II Icon > Right Mouse Button > Printer Properties**.
6. Select the **General** tab in the **Properties** window and then **Printing Test Page** to ensure printing works properly.

◆ USB Interface Windows Driver Installation

1. Run T-3II_WIN_Vx.x.x.exe.
2. Click **Next** at the initial installation window.
3. Select **USB** in the **Port Type** window and then click **Next** (Refer to Fig. 1.)
4. Turn off the printer and then back on and then click **OK** button.



5. After restarting, move to the following route to see the set printer properties:
 - ※ Windows XP: Select **Control Panel > Printer and Fax > Metapace T-3II Icon > Right Mouse Button > Properties**.
 - ※ Windows Vista or higher version: Select **Control Panel > Hardware and Sound > Device and Printer > Metapace T-3II Icon > Right Mouse Button > Printer Properties**.
6. Select the **General** tab in the **Properties** window and then **Printing Test Page** to ensure printing works properly.

◆ Ethernet Interface Model Windows Driver Installation

Refer to the user manual regarding separate Ethernet interface cards. (Refer to the CD.)

◆ WEEE (Waste Electrical and Electric Equipment)



This marking shown on the product or its literature, indicates that it should not be disposed with other household wastes at the end of its working life. To prevent possible harm to the environment or human health from uncontrolled waste disposal, please separate this from other types of wastes and recycle it responsibly to promote the sustainable reuse of material resources. Household users should contact either the retailer where they purchased this product, or their local government office, for details of where and how they can take this item for environmentally safe recycling. Business users should contact their supplier and check the terms and conditions of the purchase contract. This product should not be mixed with other commercial wastes for disposal.