

MAINTENANCE:

Your MC-10 requires no maintenance.

Product Limited Warranty

All Labelmate Products are warranted to the original end-user customer to be free from defects in materials and workmanship. If it is determined by Labelmate that a product has failed under the terms of this warranty, the product will be repaired or replaced at no charge to the customer. Labelmate reserves all rights to determination of coverage and liability under this warranty. The warranty period for all new Labelmate products is outlined below:

Warranty Period	Products Covered
5 years	Label Rewinders Label Unwinders
3 years	Label Counters (mechanical parts only) Label Slitters (mechanical parts only) Label Dispensers Printer Mechanisms
1 year	Power Supply Modules Counter modules Encoders Any products not specified above.

The warranty period for all products starts on the date purchased by the original end-user customer. Warranty coverage is not transferable with ownership and will terminate immediately upon rental, resale or any other change in ownership. This warranty does not cover repair to any product which is damaged, has been modified, is missing parts, or has been opened or repaired by any unauthorised person. Use of any unauthorised accessory or attachment will void coverage. Purchase documentation should be retained for coverage verification.

In the event your product requires service, please contact the distributor you bought the product from. The customer assumes responsibility for all cost and risk incurred in transport for service.

Labelmate makes no other warranty of any kind expressed or implied, or to suitability or fitness for a particular purpose. No other person, agent or reseller is authorised to give any warranties on behalf of Labelmate. Any obligation to warranty other than that specifically addressed above is hereby disclaimed.

LABELMATE LLC

69 AVENUE ALPHONSE XIII, 1180 BRUSSELS, BELGIUM

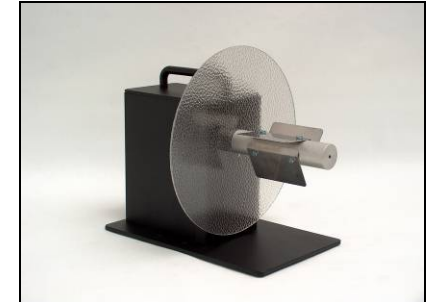
TEL: +322.375.69.60 – FAX: +322.375.38.96

brussels@labelmate.com

www.labelmateeurope.com

MC-10

MINI-CAT Label Rewinder



- **Switched Bi-Directional Control.**
- **Constant Adjustable Torque™ "CAT" Technology.**

Remove all parts from the shipping container and verify contents.

PACKAGE CONTENTS:

- *User Manual (this document)*
- *MC-10 Rewinder Unit*
- *Shaft Assembly with Flange and Bail*
- *Plastic Bag with 3 metal Vanes, 6 Screws for the Vanes.*
- *Power Supply Module*

Retain the Shipping Container and Packaging for Storage and Transport

SPECIFICATIONS:

Weight of the machine: 5,6Kg

Max. Label Roll Weight: 3Kg.

Max. Label Roll Diam.: 220mm.

Start/Stop: ON/OFF/ON Direction Switch

Power Supply: Input: 220-240VAC – 50-60Hz.

Output: Selectable 1.5VDC to 12VDC.

- **KEEP MANUAL IN A SAFE PLACE FOR FUTURE REFERENCE** •



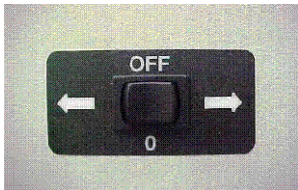
WARNING!
This Product is for indoor use only.
Not for use in wet locations.

IMPORTANT INFORMATION:

- This product is a label rewinder It is only to be used to rewind / unwind labels of the recommended dimensions and weight in an indoor, dry environment.
- The machine has to be unplugged before any manipulation.
- The machine is to be used on a flat surface, if the surface is not flat, it is to be fixed using the holes in the base plate.
- Do not leave the power cable in a passageway.
- The ambient light of the working area needs to be sufficient to avoid any risk.
- The rewinder can be used in ambient temperatures of +2°C to 40°C.
- Connection of the machine to the power source must respect local and European legislations.

SET-UP:

1. Place the MC-10 with the Rewind Shaft perpendicular to the web of the labels to be rewound, and near where the labels come out of the printer. The MC-10 is bi-directional, so can be operated in either direction.
2. Verify that the (ON/OFF/ON) Switch on the rear of the Unit is in the OFF (0) position.
3. Set the VOLT CHANGE SW Slide Switch on the AC/DC Adapter to the "4.5" position as an initial setting.
4. Insert the Power Cord into the Power Jack on the rear of the MC-10.
5. Plug the AC/DC Adapter into a suitable electrical outlet. It can be left plugged in at all times.
6. The MC-10 has a combination Power and Direction (ON/OFF/ON Direction) Switch on the Rear Panel. See photo below. The Centre Position of the Switch is "OFF" (0). To make the Rewinder run to the right (looking from the rear of the Rewinder), press the Power / Direction Switch in the direction of the right arrow. To make the Rewinder run to the left, press the Power / Direction Switch in the direction of the left arrow.



FOR YOUR SAFETY:
Switch off device before any manipulation.

REWINDING LABELS:

Rewind Directly "On-Shaft" ("coreless")

1. Slide the hook-shaped metal Bail onto the MC-10 Shaft. The straight end goes into the hole in the plastic Flange Plate. The curved end fits into the small hole in the outer end of the Shaft.
2. Insert the label web under the Bail and turn the Rewind Shaft by hand to secure the labels.
3. Place the MC-10 (ON/OFF/ON Direction) Switch to the ON position in the desired direction of operation, left or right.
4. Start the Printer and observe that the labels are being rewound correctly. You can adjust the VOLT CHANGE SW Slide Switch on the Power Supply Module to provide more or less rewind force.
5. When rewinding is finished, place the MC-10 (ON/OFF/ON) Switch in the OFF (0) position.
6. To remove the labels, first pull out the hook-shaped Bail from the center of the label roll. Then remove the labels.

Rewind on a Cardboard Core

1. To use a cardboard core, install the 3-stainless steel Fins onto the Rewind Shaft of the MC-10 using the 6-screws provided. The curved sides of the Fins face the Shaft. For narrow cores, orient the Fins next to the plastic Flange. Slide an empty cardboard core over the Fins and up against the plastic Flange Plate.
2. Use a piece of masking tape to secure the label web to the cardboard.
3. Place the MC-10 (ON/OFF/ON Direction) Switch to the ON position in the desired direction of operation, left or right.
4. Start the printer and observe that the labels are being rewound correctly. You can adjust the VOLT CHANGE SW Slide Switch on the Power Supply Module to provide more or less rewind torque.
5. When rewinding is finished, place the MC-10 (ON/OFF/ON Direction) Switch in the OFF (0) position.
6. Slide the cardboard core and the labels off the MC-10.

UNWIND FEATURE:

To use the MC-10 as an Unwinder, place the VOLT CHANGE SW to the "1.5" position and place the (ON/OFF/ON Direction) Switch in the reverse direction to provide resistance to the roll of labels you wish to unwind.